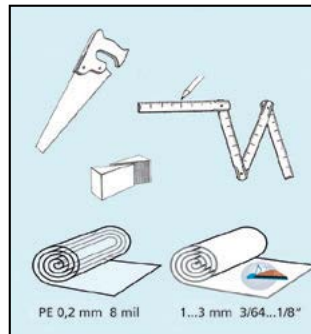
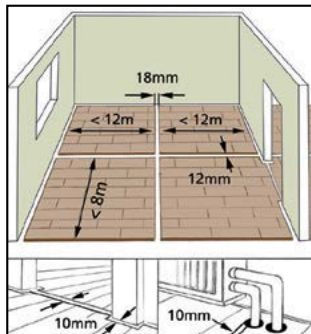
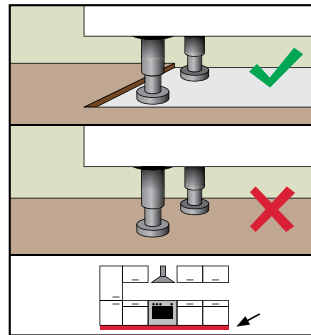
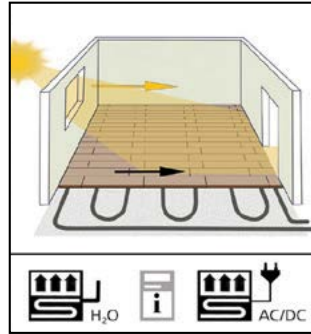
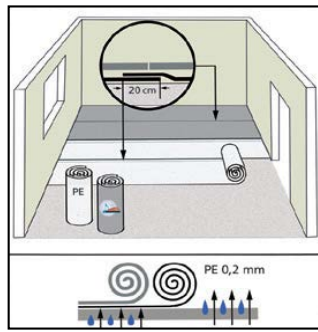


## TOP TIPS BEFORE YOU START

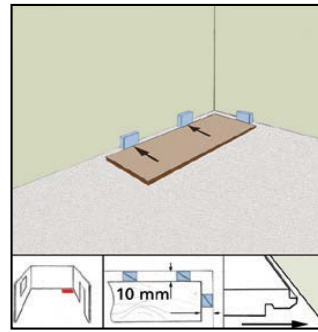


- Consult instructions for full details on site conditions and moisture content of subfloor. The moisture content of cement screeds should be 2.0% CM (3% on red scale Tramex Concrete Encounter). For anhydrite/pump screeds with underfloor heating, the moisture content should be 0.3% CM (1.6% on red scale Tramex Concrete Encounter).
- Install 0.2mm/500 gauge polythene on all concrete surfaces to provide a vapor barrier. All polythene joints should be overlapped and taped.
- Check the sub-floor is level and even before installation.
- Use a good quality flooring underlay for your floor.
- Leave boxes unopened in room for 48 hours prior to installation.
- Select board direction e.g. towards light or longest room dimension. This floor requires no glue and has a simple click system.
- Install as a floating floor with room for expansion around perimeter. Follow installation instructions for first and second row.
- Where the same floor is being installed through adjoining rooms it is important to leave a 10mm expansion gap under each door.
- Stagger joints by 30 - 40 cm thereafter.
- Select finishing profiles, skirting, pipe covers, doorway slips.
- Use felt pads and protective castors underneath furniture legs. Please use suitable cleaning products for aftercare.
- Installation instructions may vary. See pack for details.

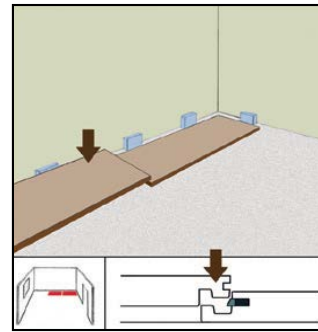
# 5G LAMINATE INSTALLATION GUIDE



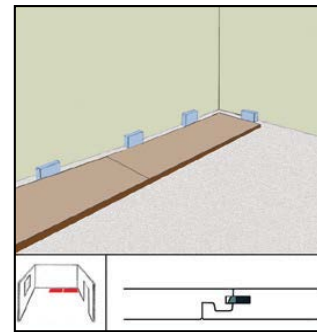
1



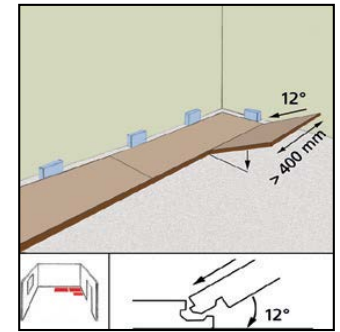
2



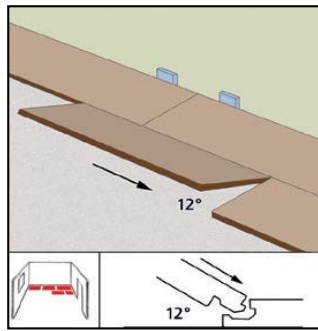
3



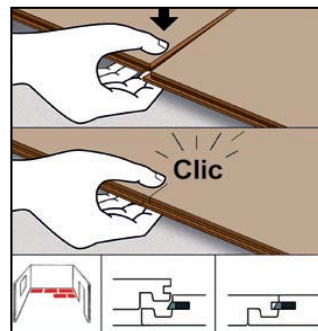
4



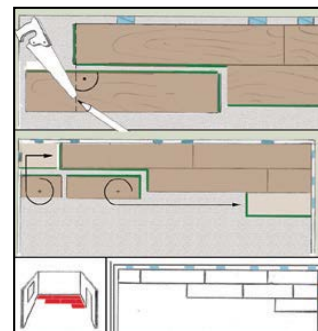
5



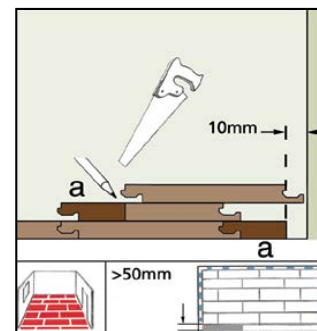
6



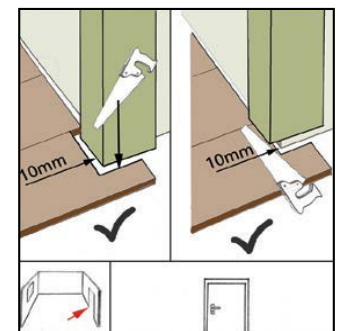
7



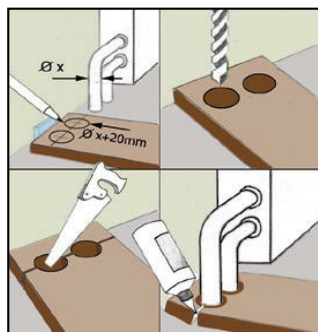
8



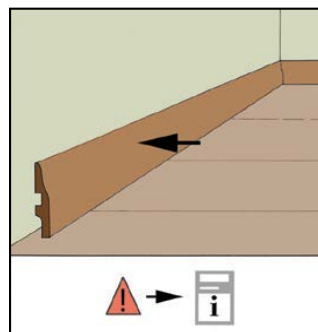
9



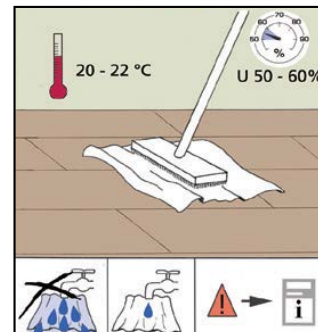
10



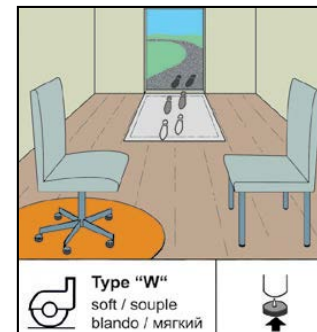
11



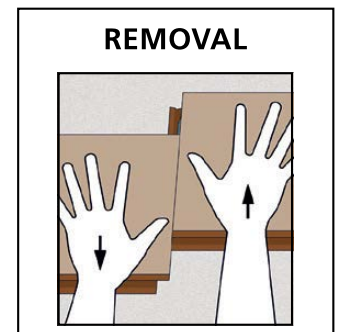
12



13



14



15