

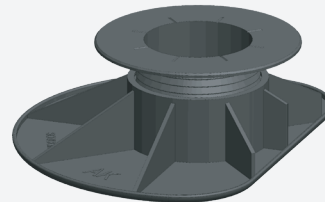
# ADJUSTABLE PEDESTAL AK 5/8

TECHNICAL  
DATASHEET

## SPECIFICATIONS

Consists of 2 pieces. The bottom piece has 8 vertical reinforcement ribs and has 1 straight side so that it can be used against a wall. The top piece has 8 recesses to be able to block the upper plate.

Color	Black
Support area	210 cm <sup>2</sup>
Outside diameter	164/215 mm
Weight	188 g/piece
Adjustable height	50 - 80 mm



Recycled material



Weatherproof



Resistant to temperatures between -25 and +70°C



PP compound



Compliant with the DTU standard 43.1 and 51.4



Capacity: 2.400 kg/m<sup>2</sup>



Tested on Roof T4 and BFL-S1

## LOAD/M<sup>2</sup>

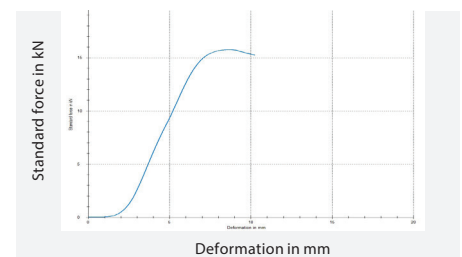
Every 600 mm l/w	1.350 kg/m <sup>2</sup>
Every 500 mm l/w	2.400 kg/m <sup>2</sup>
Every 400 mm l/w	3.750 kg/m <sup>2</sup>

### Tiles

600 x 600 mm (2,25 pcs/m <sup>2</sup> )	1.350 kg/m <sup>2</sup>
500 x 500 mm (4,00 pcs/m <sup>2</sup> )	2.400 kg/m <sup>2</sup>
400 x 400 mm (6,25 pcs/m <sup>2</sup> )	3.750 kg/m <sup>2</sup>

## PRESSURE TEST (ZWICK)

1.560 kg



## SUPPORT PLATES

For tiles



C2/4T

For wood

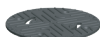


CPV+



C3/4T

Other



C0



C6/4T



STICKSOL

## ACCESSOIRES

Extension piece



F30



AF100

Slope corrector



HS2



HA5

Fitting pieces



1 - 3 mm

## PACKAGING

Bag

Dimensions	1.450 x 750 mm
Gross weight	10 kg
Quantity	50 pieces/bag

Pallet

Dimensions	1.200 x 1.100 x 2.000 mm
Gross weight	220 kg
Quantity	20 pieces/bag - 1.000 pieces

Calculation valid with correct placement and use without extension pieces. For higher construction with extension piece, these results are not valid. Minimum 1.5 threads must still be threaded into the base piece.