

ADJUSTABLE PEDESTAL PV 3.5/5

TECHNICAL DATASHEET

SPECIFICATIONS

Consists of 2 pieces. The bottom piece has 8 vertical reinforcement ribs. The top piece has 8 recesses to be able to block the upper plate.

Color	Black
Support area	300 cm ²
Outside diameter	215 mm
Weight	122 g/piece
Adjustable height	35 - 50 mm



Recycled material

Weatherproof

Resistant to temperatures between -25 and +70°C

PP compound

Compliant with the DTU standard 43.1 and 51.4

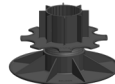
Capacity: 2.400 kg/m²

Tested on Broof T4 and BFL-S1

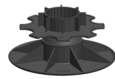
OTHER PEDESTALS



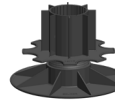
PV 5/8



PV 11/14

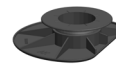


PV 8/11

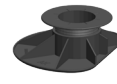


PV 14/17

PEDESTALS WALL VERSION



AK 3.5/5



AK 5/8

TOP PLATE

For tiles



C2/4T

For wood



CPV+



C3/4T

Other



CO



C6/4T



STICKSOL

ACCESSOIRIES

Extension piece



F30



AF100

Slope corrector



HS2



HA5

Fitting pieces



1 - 3 mm

LOAD/M²

Wood

Every 600 mm l/w

1.350 kg/m²

Every 500 mm l/w

2.400 kg/m²

Every 400 mm l/w

3.750 kg/m²

Tiles

600 x 600 mm (2,25 pcs/m²)

1.350 kg/m²

500 x 500 mm (4,00 pcs/m²)

2.400 kg/m²

400 x 400 mm (6,25 pcs/m²)

3.750 kg/m²

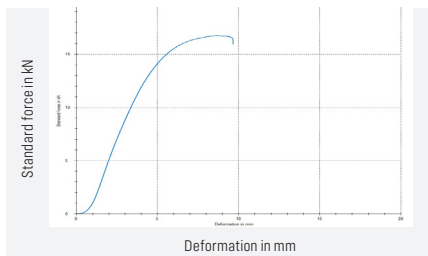


ADJUSTABLE PEDESTAL PV 3.5/5

TECHNICAL
DATASHEET

PRESSURE TEST (ZWICK)

1.440 kg



PACKAGING

Bag

Dimensions 1.450 x 750 mm

Gross weight 6,1 kg

Quantity 50 pieces/bag

Pallet

Dimensions 1.200 x 1.100 x 2.200 mm

Gross weight 166,4 kg

Quantity 24 pieces/bag - 1.200 pieces

