

# Penthouse & Suite

ROOMS AQUA 4V

Whiteriver

wood for living

**WATER RESISTANT  
LAMINATE FLOORING**



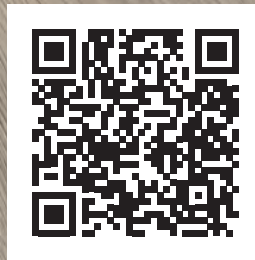
Made In  
Germany

Whiteriver

wood for living

## NEW LAMINATE ROOMS AQUA 4V

ROOMS floors are the solution for all situations. Their Aqua Pearl system protects floors against water and all kinds of liquids; they resist spills for up to 24 hours.



SCAN HERE TO SEE THE AQUA RANGE

Available in 8mm and 12mm



# 24h Protection

Don't be scared of water thanks to the Aqua Pearl system

Introducing...

# Aqua Pearl

12mm Rooms Penthouse Aqua & 8mm Rooms Suite  
The uncomplicated all-rounder.

## INTRODUCTION

When it comes to the relationship between laminate flooring and water, you will hear that great care is required – but not with our Rooms Penthouse Aqua collection. No matter whether it is a fallen flower vase, a leaking heater or the water spilled from the bowl of your beloved pet – all this leaves barely a trace on Rooms Penthouse Aqua.

Thanks to a low swell core board and a force-locked locking system, this product line is extremely water-repellent, resistant to all types of liquids, and highly resilient.

## AQUA PEARL SYSTEM

Thanks to our special AQUA-PEARL System, our Rooms Penthouse Aqua laminate is highly water-repellent, resistant to all kinds of liquids and extremely durable.



## BEHIND THE TECHNOLOGY

The Aqua Pearl system protects floors against surface water and all kinds of liquids; they resist surface spills for up to 24 hours. ROOMS Floors are 24-hour NALFA approved.

Our ROOMS Penthouse Range has a Low Swell Moisture Guard Coreboard (8% Coreboard swelling or less) board that gives enhanced anti-swelling performances over standard laminates.

The natural product is particularly suitable for children and pets who are in frequent contact with the laminate flooring. It can easily forgive a mishap or two.

The AQUA PEARL System floors can easily be cleaned with a damp mop or a steam cleaner (household appliance).

Liquids and standing water should be absorbed within 24 hours (according to NALFA surface swell test approved for 24 h). Suitable for rooms with high humidity.

Not suitable for outdoor areas, rooms with permanently high moisture load, e.g., shower cubicles, saunas and rooms with floor drains.

## 24 HOUR MOISTURE RESISTANCE

Kronotex Aqua products are tested to NALFA and ISO 4760. The NALFA test is a standardised test method of the North American Laminate Flooring Association.

Included as part of this testing is how laminate flooring behave when the surface is exposed to standing water for 24 hours.

This test method is not standardised in ISO 4760. The test exposes the flooring to surface water and is then evaluated for surface swell effect immediately after the water is cleaned up and after a recovery time period.

*Note: The test is for surface moisture and does not allow for water getting underneath the floorboards from e.g. a burst pipe / broken appliance.*

## DÉCOR PROPERTIES



### Moisture Protection 24Hour



### Structure

These panels have a special surface structure.



### Fast Installment

Fast installment thanks to an easy-to-use angle-angle locking system for the long and short sides of the boards.



### V4 - all the way round

These panels are equipped with a 45° bevelled edge all around. When joined together, a V-groove is created, which conveys a natural solid wood plank character.



### Antistatic



**Made In  
Germany**

### Manufactured In Germany

These products have been made with German engineering.



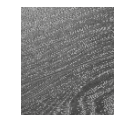
### ER | Registered Emboss

Genuine wood appearance



### Moisture Guard

Improved moisture guard core board which gives enhanced anti swelling performance over standard laminates.



### NR | Genuine Wood Appearance

Consistency between decor and embossing

## CERTIFICATION



### FSC Certified

All of our laminate products are either PEFC or FSC certified by the manufacturer.



### Blue Angel Certified

All our laminate floors in this brochure are Blue Angel certified for low emissions, sustainability & environment.



### Floor Score

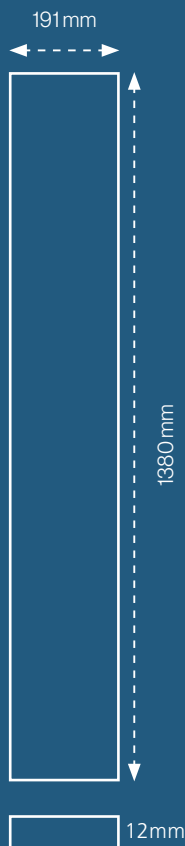
FloorScore® is the most recognized indoor air quality (IAQ) certification standard for hard surface flooring materials, adhesives, and underlayments. Developed by SCS with the Resilien.



### Aqua Pearl

Aqua Pearl system protects floors against water and all kinds of liquids; they resist spills for up to 24 hours. Our time at home can be incredibly hectic, so you need to give it your all. And if you don't deal with an accident immediately, there's no need to worry: your floor's got your back.

12MM  
ROOMS  
AQUA



BOARD SIZE

## ROOMS

As individual as you.



# Penthouse

## 12MM ROOMS AQUA 4V

Don't be scared of water thanks to the Aqua Pearl system

Our Penthouse collection is recommended for floor-resistant luxury at home, as well as for commercial use. With a thickness of 12 mm, the collection offer pleasant sound insulation and a high level of installation comfort.

We all know what it's like: you pop outside for a few minutes, and, as the weather's so nice, you don't bother closing the windows. And then the heavens open. A brief downpour doesn't just leave your clothes sodden – it leaves your floor at home drenched, too, if you've left the windows open.

ROOMS floors are the solution for all situations. Their Aqua Pearl system protects floors against water and all kinds of liquids; they resist spills for up to 24 hours. Our time at home can be incredibly hectic, so you need to give it your all. And if you don't deal with an accident immediately, there's no need to worry: your floor's got your back.

<b>THICKNESS:</b>	12 mm
<b>BOARD SIZE:</b>	1380 X 191 X 12mm
<b>BOX QUANTITY:</b>	5 Panels / 1.318 m <sup>2</sup>
<b>WARRANTY:</b>	30 Year Residential
<b>USE CLASS:</b>	33 / AC5 Suitable for high traffic commercial & domestic everyday use.



## 12MM PENTHOUSE ROOMS AQUA 4V



Our Penthouse range now has an improved moisture guard core board which gives enhanced anti swelling performance over standard laminates.



FloorScore® is the most recognized indoor air quality (IAQ) certification standard for hard surface flooring materials, adhesives, and underlayments. Developed by SCS with the Resilien

12mm Rooms Aqua Penthouse / 1383 X 193 X 12mm



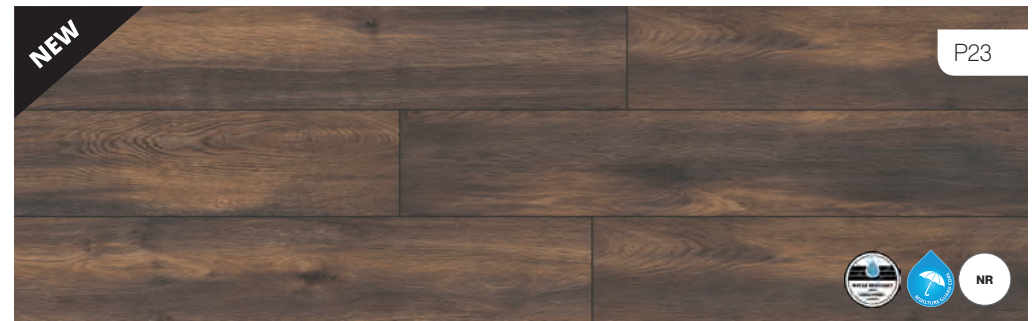
**12 X 191 X 1380MM / ATLAS OAK BEIGE 4V**  
C2221301 / D3221



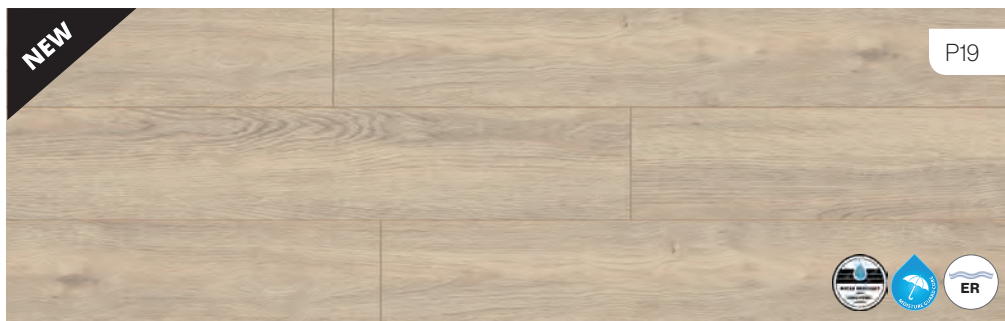
**12 X 191 X 1380MM / ADAJA OAK 4V**  
C2221316 / D40792



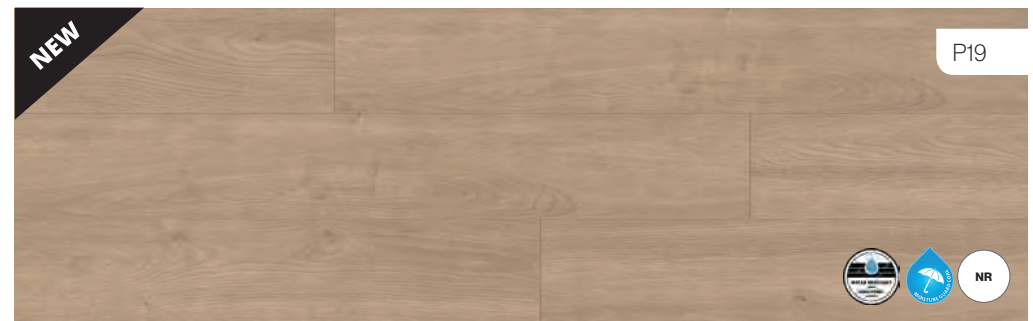
**12 X 191 X 1380MM / HARBOUR OAK GREY 4V**  
C2221306 / D3572



**12 X 191 X 1380MM / ELBA OAK 4V**  
C2221321 / R1226



**12 X 191 X 1380MM / ELBA OAK TITAN 4V**  
C2221311 / D6011



**12 X 191 X 1380MM / ELBA OAK GOLD 4V**  
C2221326 / R1227



12mm Rooms Aqua Penthouse / Elba Oak Gold 1380 x 191 x 12mm



12mm Rooms Aqua Penthouse / Harbour Oak Grey 1380 x 191 x 12mm





**ROOMS**

As individual as you.

# Penthouse

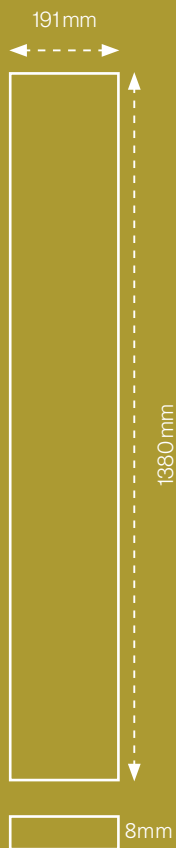
12MM ROOMS AQUA  
ELBA OAK

ROOMS floors are the solution for all situations. Their Aqua Pearl system protects floors against water and all kinds of liquids; they resist spills for up to 24 hours. Our time at home can be incredibly hectic, so you need to give it your all. And if you don't deal with an accident immediately, there's no need to worry: your floor's got your back.



12mm Rooms Aqua Penthouse / Adaja Oak 1380 x 191 x 12mm

8MM  
ROOMS  
AQUA



BOARD SIZE

## ROOMS

As individual as you.

# Suite

## 8MM ROOMS AQUA 4V

Don't be scared of water thanks to the Aqua Pearl system

With its all-round V-gap and real wood structure, our Suite collection is the right floor for lovers of robust and easy-care floors. The Suite collection is available in 2 different widths and has a beautiful selection of natural decors.

We all know what it's like: you pop outside for a few minutes, and, as the weather's so nice, you don't bother closing the windows. And then the heavens open. A brief downpour doesn't just leave your clothes sodden – it leaves your floor at home drenched, too, if you've left the windows open.

ROOMS floors are the solution for all situations. Their Aqua Pearl system protects floors against water and all kinds of liquids; they resist spills for up to 24 hours. Our time at home can be incredibly hectic, so you need to give it your all. And if you don't deal with an accident immediately, there's no need to worry: your floor's got your back.

- THICKNESS:** 8 mm
- BOARD SIZE:** 1380 X 191 X 8mm
- BOX QUANTITY:** 8 Panels / 2.109 m<sup>2</sup>
- WARRANTY:** 30 Year Residential
- USE CLASS:** 33 / AC5 Suitable for high traffic commercial & domestic everyday use.



## 8MM SUITE ROOMS AQUA 4V



Our Suite range now has an improved moisture guard core board which gives enhanced anti swelling performance over standard laminates.



FloorScore® is the most recognized indoor air quality (IAQ) certification standard for hard surface flooring materials, adhesives, and underlayments. Developed by SCS with the Resilien

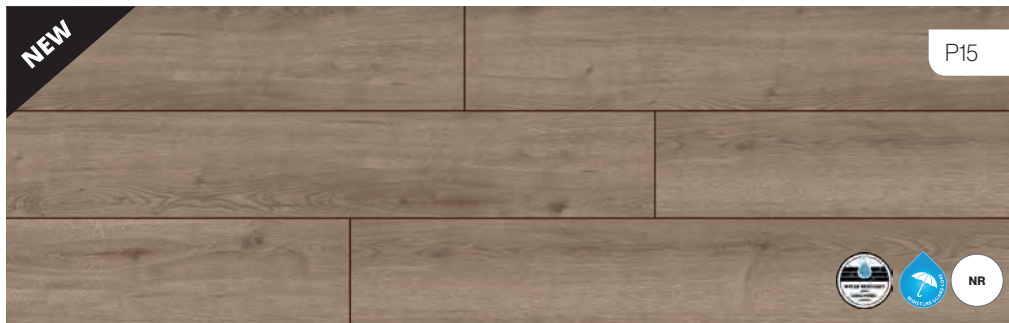
12mm Rooms Aqua Suite / 1380 X 191 X 8MM



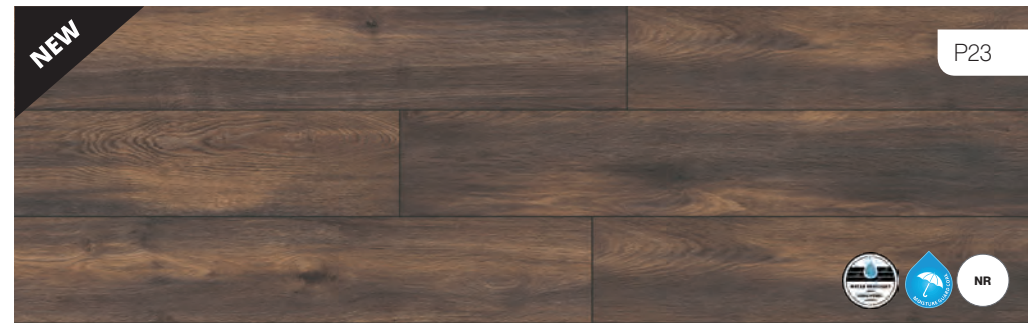
**8 X 191 X 1380MM / LUXOR OAK PLATIN 4V**  
C1421301 / RV821



**8 X 191 X 1380MM / LUXOR OAK GOLD 4V**  
C1421311 / RV822



**8 X 191 X 1380MM / LUXOR OAK GREY 4V**  
C1421306 / RV825



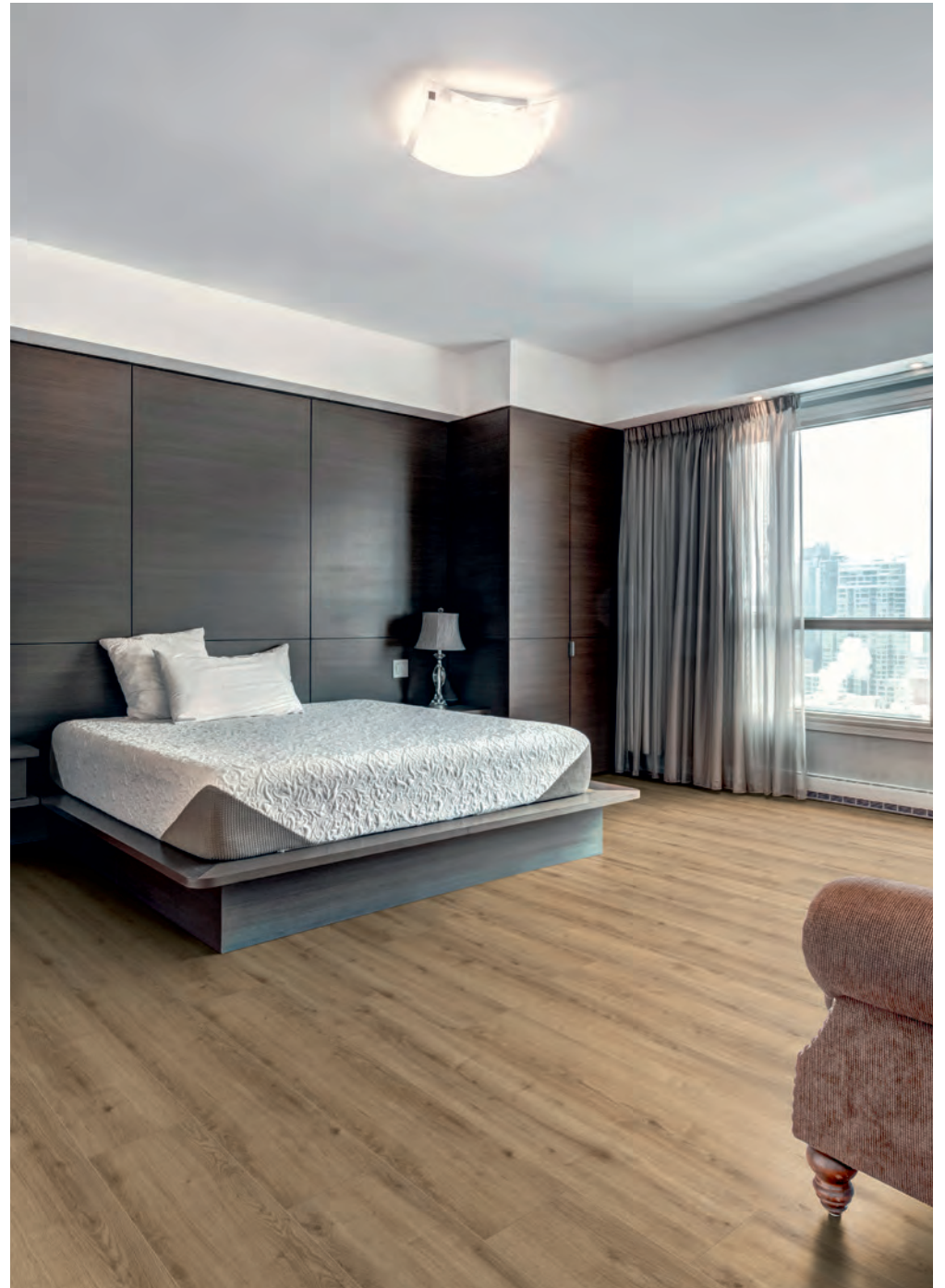
**8 X 191 X 1380MM / ELBA OAK BROWN 4V**  
C1421316 / RV827



ROOMS floors are the solution for all situations. Their Aqua Pearl system protects floors against water and all kinds of liquids; they resist spills for up to 24 hours. Our time at home can be incredibly hectic, so you need to give it your all. And if you don't deal with an accident immediately, there's no need to worry: your floor's got your back.



8mm Rooms Aqua Suite / Luxor Oak Grey 1380 x 191 x 8mm



8mm Rooms Aqua Suite / Luxor Oak Gold 1380 x 191 x 8mm



**ROOMS**  
As individual as you.

# Suite

8MM ROOMS AQUA  
ELBA OAK BROWN 4V

With its all-round V-gap and real wood structure, our Suite collection is the right floor for lovers of robust and easy-care floors.



8mm Rooms Aqua Suite / Luxor Oak Platin 1380 x 191 x 8mm