

**Whiteriver**

wood for living



# Floor Finishing & Accessories

---

# MEET THE TEAM



**Liam Boylan**  
Sales & Technical  
087 0671000  
Finishes@wrg.ie



**Patrick Duff**  
Sales & Technical  
087 3332458  
Finishes@wrg.ie



**Patrick Bell**  
Dispatch & Support  
041 686 1000  
Finishes@wrg.ie

---

## OPENING HOURS

### MONDAY-THURSDAY

8.30am - 5.30pm

### FRIDAY

8.30am - 4.30pm

Closed for lunch each day  
from 1.10pm-2pm.

**Tel:** 041 686 1000

**Email:** finishes@wrg.ie

**Web:** www.wrg.ie

## Welcome

We would like to welcome you to our new trade catalogue for 2024 and we hope you find the format easy to use and follow.

We have recently launched an exciting new partnership with Saicos Coating Systems to provide our customers with comprehensive solutions for all their floor finishing requirements. We also welcome new innovations and product offerings from our existing partners; Junckers, Sherwin Williams, Sait & Lägler to offer an improved product offering. We would like to thank you for your support and custom over the last year and we look forward to working with you again in the year ahead.

---

## Orders & Deliveries

Orders received before 11am will be dispatched on the same day.

Generally orders will be delivered on next working day following dispatch but may take 1-2 working days at busier times.

Collections must be made at least 30 minutes prior to closing.

### Via Roadfreight

1m pallet

*Delivery premises must be attended at all times with facilities to unload pallets.*

### Fastway Courier Charges

All orders above €350 value will not incur a delivery charge

All other orders will be charged at €10 Per Carton / Box

*Please provide an eircode and contact number for the courier.*

# INDEX

## Finishes

- 06** | Junckers
- 18** | Saicos
- 28** | Sherwin Williams
- 30** | Blanchon

## Floor Care & Accessories

- 31** | Adhesive & Sealers
- 32** | Installation Accessories
- 34** | Unfinished Flooring

## Abrasives

- 38** | Sait Abrasives

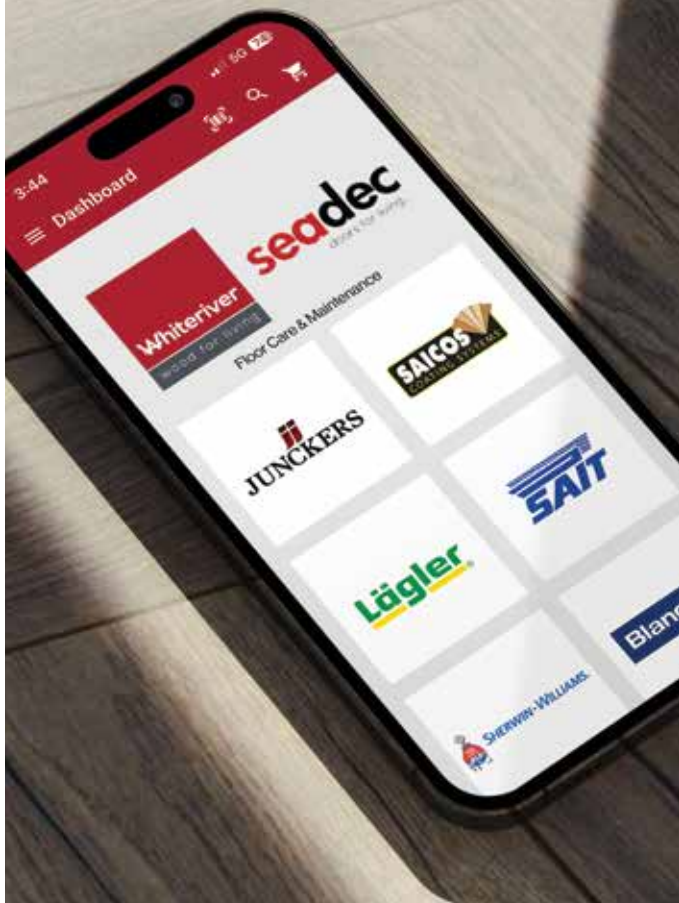
## Lägler Sanding Machines

- 42** | Machines & Accessories
- 50** | Hummel Spare Parts
- 66** | Flip Spare Parts
- 78** | Trio Spare Parts



SHERWIN-WILLIAMS.





# Introducing the Whiteriver App

Exciting news!! Our Whiteriver app portal has been extended to our floor care ranges and will be live in Q2 2024.

What does this mean for you?

**Seamless Ordering:** Effortlessly browse and purchase a diverse range of top-quality goods directly from your preferred brands within our user-friendly app interface.

**Expanded Access:** Enjoy unparalleled convenience as you gain access to a wider array of specialised products tailored to meet the unique needs of your floor care maintenance projects.

At Whiteriver Group, we remain committed to empowering our valued customers with innovative solutions that elevate your experience and drive unparalleled success in your endeavors. Stay tuned for the official launch of our enhanced app, where excellence meets convenience like never before!



# JUNCKERS

Junckers Wood Care range includes a fully integrated range of products for regular maintenance, refurbishment or surface treatment of brand new wooden floors, meaning that we provide a 100% solution regardless of project type.

Junckers produce Wood Care products specially developed for Sports, commercial and residential areas.

All Junckers products are designed to help maintain a healthy indoor climate, be kind to the environment and to complement timber as a natural raw material. This means that our customer will get the full environmental and health benefits which hardwood floors offer.

During manufacture of Junckers Wood Care Solutions, they use stringent quality control throughout. The policy never to compromise on the quality of materials means that customers will always get the most durable and beautiful finish possible and contractors can be confident that they will be giving their customers the best possible result.

Junckers recently announced some significant changes to their Lacquers and Oil!

This exciting transformation underscores Junckers dedication to quality, sustainability, and the core mission of preserving and caring for wood. To symbolize this commitment, you will notice rings of trees incorporated into the design as a meaningful element; Nature's own fingerprint and a seal of quality.

*New look, but of course the same trusted products!*





## FILLER & PRIMER

PREV. PRODUCT NAMES		NEW PRODUCT NAMES
<b>PRELAK</b>	→	<b>WB PRIMER</b>
<b>BASEPRIME</b>	→	<b>SB PRIMER</b>
<b>BASEFILL</b>	→	<b>SB FILLER</b>

### OLD PACKAGING



### NEW PACKAGING



## LACQUERS

PRE V. PRODUCT NAMES		NEW PRODUCT NAMES
<b>HP SPORT</b>	→	<b>HP800 SPORT</b>
<b>HP COMMERCIAL</b>	→	<b>HT700 FLOOR LACQUER</b>
<b>STRONG</b>	→	<b>MT500 FLOOR LACQUER</b>

### OLD PACKAGING



### NEW PACKAGING



**JUNCKERS**



## SB FILLER / Basefill

Quick-drying solvent based filler for filling gaps in the floor.

Mixed with sanding dust from the sanded floor. It is used for filling gaps up to 2mm wide.

SB Filler is used in combination with floor oil, solvent-based or water-based lacquers, and is suitable for most sanded and untreated parquet floors, including most exotic wood floors.



### TECHNICAL DATA - (based on 20°C & 60% RH)

Drying time (minutes)	15
Packaging size (Litre)	5L
Storage, unopened containers stored in a cool, dry place	24 Months

Code	Product
F2011009	Junckers SB Filler / Basefill - 5 Litre

**JUNCKERS**



## SB PRIMER / BasePrime

Solvent based fast curing primer

For wooden floors where water-based primers cannot be used due to poor adhesion, for example exotic and oily timbers

SB Primer gives the floor more depth of colour and must only be used directly on bare wood.



### TECHNICAL DATA - (based on 20°C & 60% RH)

Drying time (minutes)	30 - 60
Packaging size (Litre)	5
Storage, unopened containers stored in a cool, dry place	24 Months

Code	Product
F2011012	Junckers SB Primer / Baseprime 5L





## WB PRIMER / Prelak

Single component water-based primer

Fast drying primer for use on untreated or machine sanded wooden floors in commercial, residential or sports areas. By using a primer the risk of side-bonding between the individual floor boards is minimised.

Protective coats of one of Junckers water-based floor lacquers must be applied after priming.

WB Primer Colour: A new way of colouring light timber floors like pine and oak. By adding colour to the primer you are able to both colour and prime at the same time and benefit from the same drying time as WB Primer clear.

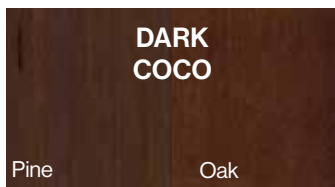
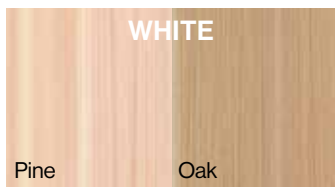
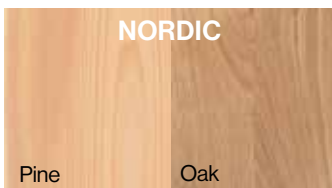
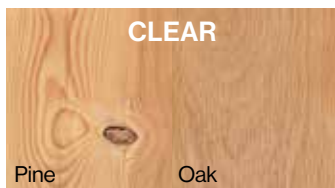


### TECHNICAL DATA - (based on 20°C & 60% RH)

Drying time (hours)	1-2
Packaging size (Litre)	5L
Storage, unopened containers stored in a cool, dry place	12 Months

\*When using coloured Prelak an additional coat can be applied to obtain more colour intensity.

Code	Product
F2011011	Junckers WB Primer / Prelak Clear - 5 Litre
F2011070	Junckers WB Primer / Prelak Dark Coco - 5 Litre
F2011072	Junckers WB Primer / Prelak Driftwood Grey - 5 Litre
F2011071	Junckers WB Primer / Prelak Nordic - 5 Litre
F2011055	Junckers WB Primer / Prelak White - 5 Litre





## MT500 / Strong

Single component water-based finish



Low odour floor lacquer for wooden floors in heavy traffic residential and lighter traffic commercial areas. One-component water-based Co-polymer polyurethane/acrylic lacquer. Non-yellowing and excellent clarity even on dark coloured floors. Suitable for previously sealed floors as well as fully sanded floors in combination with primer.



- Excellent level and flow characteristics
- Low odour
- Can be applied on new or sanded old floors
- Suitable for use on all kinds of indoor woodwork
- Suitable for heavy traffic residential and lighter traffic commercial areas

### TECHNICAL DATA - (based on 20°C & 60% RH)

<b>Drying time (hours)</b>	4
<b>Light traffic (hours)</b>	8
<b>Fully cured (days)</b>	3
<b>Packaging size (Litre)</b>	5
<b>Storage, unopened containers stored in a cool, dry place</b>	12 Months

Code	Product
F2011001	Junckers MT500 / Strong - Matt (20) - 5 Litre
F2011002	Junckers MT500 / Strong - Silk Matt (50) - 5 Litre





## HT700 / HP Commercial

Two component water-based finish



Premium quality two-component water-based 100% polyurethane lacquer. For use in very high traffic areas; exceptionally durable and scuff resistant. Non-yellowing, very fast curing and ready for use the following day. Must be mixed with hardener before use.



- Suitable for high traffic commercial areas
- Extremely durable
- Ease of application
- Very fast curing
- Apply max. 2 coats per day

### TECHNICAL DATA - (based on 20°C & 60% RH)

<b>Drying time (hours)</b>	3
<b>Light traffic (hours)</b>	8
<b>Fully cured (days)</b>	3
<b>Packaging size (Litre)</b>	4.95
<b>Storage, unopened containers stored in a cool, dry place</b>	12 Months

Code	Product
F2011057	Junckers HT700 / HP Commercial - Matt (20) - 4.95 Litre
F2011006	Junckers HT700 / HP Commercial - Ultramatt (10) - 4.95 Litre
F2011005	Junckers HT700 / HP Commercial - Silk Matt (50) - 4.95 Litre





## HP800 / HP Sport

Two component water-based finish

Our premium quality two-component water-based 100% polyurethane lacquer for very high traffic sports floors. Non-yellowing, extremely durable and scuff resistant, and very fast curing, so the floor is ready for use the next day.

Complies with the friction requirements of EN 14904 for multi-purpose sports floors. Must be mixed with hardener before use.



### TECHNICAL DATA - (based on 20°C & 60% RH)

Drying time (hours)	3
Light traffic (hours)	8
Fully cured (days)	3
Packaging size (Litre)	4.95L
Storage, unopened containers stored in a cool, dry place	12 months

Code	Product
F2011005	Junckers HP800 / HP Sport - Silk Matt (50) - 4.95 Litre

### Juckers HP800

Durable, eco-friendly water-based lacquer for wood surfaces. Protects, enhances, and dries fast with a clear, long-lasting finish. Ideal for floors and indoor applications.





## HP Sport Linemarking

Water-based 2 component line marking paint



Water based two-component product for painting court markings and other areas in gymnasiums and sports halls. Recommended for use on floors coated with Junckers HP800 Sport and on Junckers prefinished lacquered floors.

Approved according to the European sports norm EN 14904. Must be mixed with hardener before use.



### TECHNICAL DATA - (based on 20°C & 60% RH)

Drying time (hours)	16
Light traffic (hours)	8
Fully cured (days)	3
Packaging size (Litre)	2.2L
Storage, unopened containers stored in a cool, dry place	12 months

Code	Product
F2011021	Junckers HP Sport Linemarking - White - 2.2 Litre
F2011024	Junckers HP Sport Linemarking - Yellow - 2.2 Litre
F2011035	Junckers HP Sport Linemarking - Red - 2.2 Litre
F2011023	Junckers HP Sport Linemarking - Green - 2.2 Litre
F2011022	Junckers HP Sport Linemarking - Blue - 2.2 Litre
F2011020	Junckers HP Sport Linemarking - Black - 2.2 Litre

#### Colours Available





## Sport Cleaner / Sylva Cleaner

Sport Cleaner is a universal soap for sports floors. The soap does not leave a film or residue on the floor. To neutralise Sport Cleaner before re-lacquering or to maintain slip resistance, use Junckers Neutralizer.

- 5 Ltr
- 50 - 200ml / 10 Ltr
- Cloth /flat mop application

Code	Product
F2011025	Junckers Sport / Sylva Cleaner - 1 Litre
F2011027	Junckers Sport / Sylva Cleaner - 5 Litre



## Sport Resin Remover

Sport Resin Remover is a water-based degreaser designed for cleaning resin off floors. The product is added to the freshwater tank in washing machines. For professional use.

- 5 Ltr
- 1 to 10 parts water
- Sponge / cloth / mop application

Code	Product
F2011029	Junckers Sport Resin Remover / Dissolver- 5 Litre



**JUNCKERS**



## Floor Cleaner / Sylva Cleaner

Universal cleaner for daily and periodic cleaning of lacquered and oiled wood floors.

Does not leave a film or residue on the floor.

- 1 / 5 Ltr
- 50 - 200ml / 10 Ltr
- 5 minute drying time at 20°C & 60% RH
- Well wrung cloth / mop application

Code	Product
<b>F2011025</b>	<b>Junckers Floor / Sylva Cleaner - 1 Litre</b>
<b>F2011027</b>	<b>Junckers Floor / Sylva Cleaner - 5 Litre</b>

**JUNCKERS**



## Neutralizer

Desolves grease and residue from soap.

Recommended for use before resealing the floor with lacquer.

- 1 Ltr
- 200ml / 10 Ltr
- 5 minute drying time at 20°C & 60% RH
- Well wrung cloth / mop application

Code	Product
<b>F2011028</b>	<b>Junckers Neutralizer - 1 Litre</b>







2K Eco Protect Oil

Penetrating urethane oil with Hardener

Priming and finishing oil for untreated/sanded wooden floors. Ready for use within one working day. Low VOC content. Use the oil with or without hardener. Add hardener for increased durability and water resistance. Can be overcoated with a water-based lacquer, recommend using HT700.

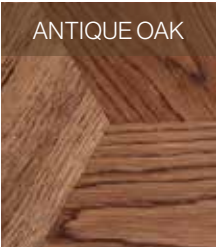
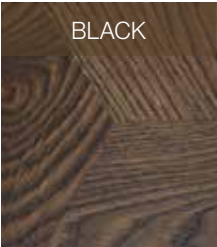


TECHNICAL DATA - (based on 20°C & 60% RH)

Drying time (hours)	6-8
Application of lacquer finishing coat (hours)	16-24
Ready for use (hours)	24
Fully cured (days)	3
Packaging size (Litre)	2.53L
Storage, unopened containers stored in a cool, dry place	24 months

Code	Product
F2011076	Junckers 2K Eco Protect Oil Nordic - 2.53 Litre
F2011077	Junckers 2K Eco Protect Oil White - 2.53 Litre
F2011078	Junckers 2K Eco Protect Oil Black - 2.53 Litre
F2011079	Junckers 2K Eco Protect Oil London Grey - 2.53 Litre
F2011080	Junckers 2K Eco Protect Oil Antique Oak - 2.53 Litre

2K Eco Protect Oil - Range of colours available





## Rustic Floor Oil / Rustic Oil

Penetrating urethane oil

Priming and finishing oil for untreated/sanded wooden floors. Use Rustic Floor Oil clear for the classic look or Rustic Floor Oil colour to give the room character. Can be overcoated with our HT700 water-based lacquer.

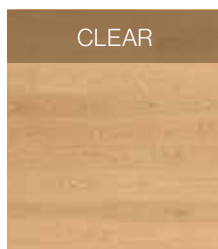
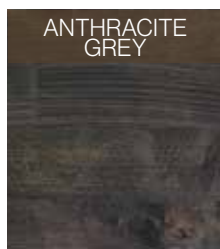
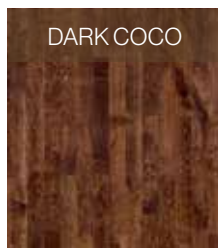
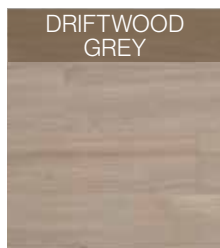
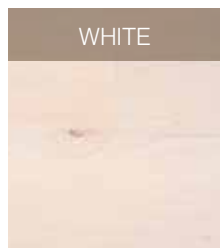


### TECHNICAL DATA - (based on 20°C & 60% RH)

Drying time (hours)	6-8
Application of finishing coat (hours)	16-24
Ready for use (hours)	24
Fully cured (days)	3
Packaging size (Litre)	2.5L
Storage, unopened containers stored in a cool, dry place	24 months

Code	Product
F2011063	Junckers Rustic Oil Anthracite Grey - 2.5 Litre
F2011034	Junckers Rustic Oil White - 2.5 Litre
F2011040	Junckers Rustic Oil Dark Coco - 2.5 Litre
F2011065	Junckers Rustic Oil Driftwood Grey - 2.5 Litre
Z5010107	Junckers Rustic Oil Clear - 2.5 Litre

### Rustic Floor Oil - Range of colours available





Saicos are committed to permanently beautifying, protecting and preserving wood and wood-based materials. Saicos think about nature and human health and always offer the user economical, uncomplicated and high-quality solutions.

As a leading manufacturer of wood coating systems for indoor and outdoor use, they enjoy the reputation of being an innovative, reliable and service-oriented partner worldwide. They are a full-service provider and our product range includes ecological paints, processing tools and care products for all types of wood and wood materials.





## ECOLINE MULTITOP EXTENSIONS / ADDITIVES

An infinite number of variants

Hardener, Anti-slip R10 or UV protection? We offer the right flexible and space-saving solution. Forget about using countless different lacquer cans and containers, now you only need space for the unique MultiTop and its additives. These extensions can be ordered individually and are supplied in the proven 0.45 litre containers. This means you save valuable storage space and can still respond to customer requests on short notice. It can also be used on all Ecoline Oil Ground Coats, as well as Ecoline Ground Coat "Speed".

### HARDENER 2K

With the additive Hardener 2K in Ecoline MultiTop, the Lacquer dries faster, especially under difficult conditions such as high humidity.



### UV PROTECTION

Significantly reduces the natural colour changes of the wood.



### ANTI-SLIP R10

A major requirement for objects can be fulfilled with the Ecoline MultiTop Slip Resistant additive.



### DElayer SLOW DOWN

Extends the workability of the lacquer. Particularly suitable for critical construction site conditions with high temperatures and low humidity.



### PURE / EXTRA WHITE / PITCH BLACK

**Pure** - For creating a perfectly protected wood surface that looks untreated.

**Extra White** - For an extra white floor, we recommend the combination with Ecoline Oil Ground Coat 3408Eco.

**Pitch Black** - The result is a black surface with an extraordinary effect that still reveals the structure of the wood and the installation pattern.



#### The application?

**Unchanged!**

Add additive to the lacquer, shake well and the coating is ready for use.





## Ecoline MultiTop

The modular lacquer system - different colours, different functions

The all-rounder for a perfect wooden floor. With the SAICOS Ecoline MultiTop System, we have created a unique modular coating system that can be adapted to your individual needs and various areas of application. Multitop without hardener is the perfect choice for surfaces without extremely high demands in residential sector. It can also be used without a primer.



### TECHNICAL DATA - (based on 20°C & 60% RH)

<b>Drying time (hours)</b>	3
<b>Light traffic (hours)</b>	8
<b>Fully cured (days)</b>	3
<b>Packaging size</b>	4.55L
<b>Storage, unopened containers in a cool, dry place</b>	12 Months

Code	Product
<b>F2015001</b>	<b>Saicos Ecoline MultiTop Lacquer Ultramatt (6) 4.55L</b>
<b>F2015057</b>	<b>Saicos Ecoline MultiTop Lacquer Satin (22) 4.55L</b>
<b>F2015003</b>	<b>Saicos Ecoline MultiTop Lacquer Silk Matt (55) 4.55L</b>

### All possible combinations at a glance:

	Hardener 2k	UV Protection	Extra White	R10"	Pitch Black	Slow Down	Pure
<i>MultiTop</i>	✓		✓		✓		✓
<i>Hardener 2K</i>		✓		✓		✓	
<i>UV Protection</i>	✓			✓		✓	
<i>Extra White</i>	✓	✓		✓		✓	
<i>"R10"</i>	✓		✓			✓	
<i>"Slow Down"</i>	✓	✓	✓	✓	✓		✓
<i>Pitch Black</i>	✓	✓		✓		✓	
<i>Pure</i>	✓	✓		✓		✓	



## Hardener 2K

With Additive Hardener 2K, SAICOS MultiTop dries faster, especially under difficult conditions such as high humidity. In general, the treated surfaces are more resilient and abrasion-resistant earlier.

Code	Product
<b>F2015004</b>	<b>Saicos Hardener 2K 0.45L</b>

## UV Protection

Wood is exposed to the sun every day. Ecoline UV Protection significantly reduces the natural colour changes of the wood.



Code	Product
F2015005	Saicos UV Protection 0.45L



## Slip Resistant 'R10'

A major requirement for projects can be fulfilled with the Ecoline Multitop Slip Resistant additive particularly suitable for stairs, commercial areas and nursing homes. Achieves 61 (wet) PTV to BS 7976:2

Code	Product
F2015007	Saicos Slip Resistant R10 0.45L

## Delayer 'Slow Down'

Extends the workability of the lacquer, especially under critical site conditions with high temperatures and low humidity.



Code	Product
F2015008	Saicos Delayer Slow Down 0.45L



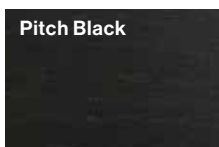
## Pure / Extra White / Pitch Black

**Pure** - When rolling Ecoline Multitop with the Pure additive a perfectly protected wood surface can be achieved that looks as if its untreated.

**Extra White** - For an extra white floor add to Multitop as top coat to Ecoline ground coat oil extra white.

**Pitch Black** - A black surface with extraordinary effect can be accomplished. The structure of the wood and laying system is still visible.

Code	Product
F2015010	Saicos Ecoline Multitop Pure 0.45L
F2015006	Saicos Ecoline Multitop Extra White 0.45L
F2015009	Saicos Ecoline Multitop Pitch Black 0.45L

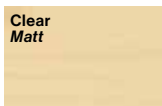
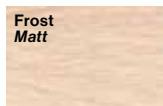




## Premium Hardwax-Oil

The multifunctional premium protection for all wooden surfaces

For natural, permanently beautiful surfaces that are easy to maintain, we recommend our SAICOS Premium Hardwax-Oil. The natural ingredients of the hardwax-oil penetrate deeply into the pores of the wood and give the surface a wonderful touch. Surfaces treated with Saicos Premium Hardwax Oil can be sanded and partially re-oiled at any time. No visible contact points and all naturally based, suitable for all wood surfaces.



### TECHNICAL DATA - (based on 20°C & 60% RH)

Drying time (hours)	3-5
Light traffic (hours)	8
Fully cured (days)	5-7
Packaging size	2.5L
Storage, unopened containers in a cool, dry place	5 Years

Code	Product
F2015011	Saicos Premium Hardwax- Oil Clear Matt (12) 2.5L
F2015058	Saicos Premium Hardwax-Oil Clear Satin Matt (22) 2.5L
F2015013	Saicos Premium Hardwax-Oil Pure Ultra Matt (6) 2.5L
F2015059	Saicos Premium Hardwax-Oil Frost Matt (12) 2.5L



## Additive Hardener 2K

With the Additive Hardener 2K, the colourless SAICOS Premium Hardwax-Oil dries quicker even under difficult working conditions e.g. high air humidity. In general, coated surfaces can be walked on earlier and have an improved abrasion hardness. The additive can also be used for the Ecoline Oil Ground coat.

Code	Product
F2015014	Saicos Premium Hardwax-Oil 2K Hardener





## Worktop Oil



**Clear  
Matt**



### TECHNICAL DATA - (based on 20°C & 60% RH)

Drying time (hours)	4-5
Reccomended number of coats	3
Packaging size	0.5L
Storage, unopened containers in a cool, dry place	5 Years

Code	Product
F2015060	Saicos Worktop Oil Clear Matt 0.5L





## Ecoline Oil Ground Coat

A good foundation is the be-all and end-all for a perfect coating

Highlight the beauty of your wood with pure natural oil, low solvent, high pigmented, for professional usage. The Ecoline oil ground coat has been especially developed for wood, cork, and bamboo floors. It combines exceptional abrasion resistance with high durability and emphasises the natural beauty of the wood.

Also compatible with Hardener 2K



### TECHNICAL DATA - (based on 20°C & 60% RH)

Drying time (hours)	8
Application of finishing coat (hours)	10-12
Light traffic (hours)	12
Fully cured (days)	5
Packaging size	0.75L
Storage, unopened containers in a cool, dry place	5 Years

See below codes and pricing for 750ml size.

**\*Tester pots (0.125L) are also available in each colour.**

Code	Product
F2015016	Saicos Ecoline Ground Coat Oil - Extra White 0.75L
F2015018	Saicos Ecoline Ground Coat Oil - White 0.75L
F2015020	Saicos Ecoline Ground Coat Oil - Clear 0.75L
F2015022	Saicos Ecoline Ground Coat Oil - Birch 0.75L
F2015024	Saicos Ecoline Ground Coat Oil - Silver Grey 0.75L
F2015026	Saicos Ecoline Ground Coat Oil - Pear 0.75L
F2015028	Saicos Ecoline Ground Coat Oil - Chestnut 0.75L
F2015030	Saicos Ecoline Ground Coat Oil - Teak 0.75L
F2015032	Saicos Ecoline Ground Coat Oil - Mahogany 0.75L
F2015034	Saicos Ecoline Ground Coat Oil - Smoked Oak 0.75L
F2015036	Saicos Ecoline Ground Coat Oil - Basalt Grey 0.75L
F2015038	Saicos Ecoline Ground Coat Oil - Graphite 0.75L
F2015040	Saicos Ecoline Ground Coat Oil - Antique Grey 0.75L
F2015042	Saicos Ecoline Ground Coat Oil - Walnut 0.75L
F2015044	Saicos Ecoline Ground Coat Oil - Rosewood 0.75L
F2015063	Saicos Ecoline Ground Coat Oil - Jacobean Brown 0.75L
F2015067	Saicos Ecoline Ground Coat Oil - Brown 0.75L
F2015065	Saicos Ecoline Ground Coat Oil - Dark Brown 0.75L

# Ecoline Oil Ground Coat - Colours Available

<b>Extra-White</b> <i>Transparent</i>	<b>White</b> <i>Transparent</i>	<b>Clear</b> <i>Transparent</i>
<b>Birch</b> <i>Transparent</i>	<b>Silver Grey</b> <i>Transparent</i>	<b>Pear</b> <i>Transparent</i>
<b>Chestnut</b> <i>Transparent</i>	<b>Teak</b> <i>Transparent</i>	<b>Mahogany</b> <i>Transparent</i>
<b>Smoked Oak</b> <i>Transparent</i>	<b>Basalt Grey</b> <i>Transparent</i>	<b>Graphite</b> <i>Transparent</i>
<b>Antique Grey</b> <i>Transparent</i>	<b>Walnut</b> <i>Transparent</i>	<b>Rosewood</b> <i>Transparent</i>
<b>Jacobean Brown</b>	<b>Brown</b> <i>Transparent</i>	<b>Dark Brown</b>





## Ecoline Wash Care

Regular Cleaning of lacquered and oiled floors

For solvent-free damp cleaning of all wood and cork floors and all other wipeable floors. Made of plant soaps and natural care ingredients, it cleans and protects without streaks. Ecoline Wash Care protects against recontamination and is especially kind to skin. *Very well suited for laminate floors.*



### TECHNICAL DATA - (based on 20°C & 60% RH)

Packaging size	1L / 5L
Storage, unopened containers in a cool, dry place	Unlimited

Code	Product
F2015047	Saicos Ecoline Wash Care 1L - Concentrated
F2015048	Saicos Ecoline Wash Care 5L- Concentrated
F2015056	Saicos Ecoline Maintenance Set (See page 32)



## Ecoline Magic Cleaner

Intensive Cleaning of lacquered and oiled floors

Save yourself the hard work of sanding worn down surfaces. The perfect solvent free solution.

Suitable for intensive cleaning of all wooden surfaces and all other surfaces such as PVC, linoleum and tile. Removes nicotine, fat and dirt, e.g. in the kitchen and bathroom. Suitable for cleaning machines. 1 liter is sufficient for approx. 10 litres of water.



### TECHNICAL DATA - (based on 20°C & 60% RH)

Packaging size	1L
Storage, unopened containers in a cool, dry place	Unlimited

Code	Product
F2015049	Saicos Ecoline Magic Cleaner 1L - Concentrated
F2015050	Saicos Ecoline Magic Cleaner Spray 1L - Ready to use spray
F2015056	Saicos Ecoline Maintenance Set (See page 32)



## Ecoline Wax Care

Maintenance & regeneration of oiled floors

Ecoline Wax Care is a naturally based, solvent-free fluid cleaning and care product for wood. It is specially developed for wood and cork floors with oiled surfaces, as well as furniture (desk and table surfaces) and other wood surfaces. For freshening and caring for heavily worn floors. Regular care protects, regenerates and freshens the surface.



### TECHNICAL DATA - (based on 20°C & 60% RH)

Packaging size	1L
Storage, unopened containers in a cool, dry place	12 Months

Code	Product
F2015054	Saicos Ecoline Wax Care 1L - Concentrated
F2015056	Saicos Ecoline Maintenance Set (See page 32)



## Wash Care Oil

Refresh heavily used oiled floors

Especially for oiled and waxed parquet. One cap size for 1m². Apply equally with the SAICOS Telescope-Maintenance Cloth on the cleaned floor and let dry.

Frequency of maintenance:  
*Annually (Commercial sector) or according to demand.*



### TECHNICAL DATA - (based on 20°C & 60% RH)

Packaging size	1L
Storage, unopened containers in a cool, dry place	5 years

Code	Product
F2015055	Saicos Ecoline Wash Care Oil 1L - Ready to use



**SHERWIN-WILLIAMS®**



The Sherwin-Williams Company delivers the best in paint and coatings products to the world. Every day, our more than 64,000 employees provide the energy and experience to build on our track record of success – enabling us to innovate and grow in new and exciting ways. With our people as the foundation of our Company, we offer industry-leading innovation, value-added service and expertise, and differentiated distribution to our growing base of professional, industrial, commercial and consumer customers.

Sherwin-Williams has one of the industry's most recognized portfolios of branded and private-label products. The Company's Sherwin-Williams® branded products are sold exclusively through a chain of more than 5,000 company operated stores and facilities in the United States, Canada, the Caribbean and Latin America.



**SHERWIN-WILLIAMS®**

## DM 1200 A/C Lacquer

Two component solvent-based finish

Sherwin Williams® A/C Parquet flooring lacquer is a two component, acid catalysing, flooring lacquer that produces a tough finish with a high level of resistance to most household liquids.



### TECHNICAL DATA - (based on 20°C & 60% RH)

Drying time (hours)	1
Light traffic (hours)	8
Fully cured (days)	3
Packaging Size	5.2L
Storage in original, unopened containers stored in a cool, dry place	5 Years

Code	Product
F2014001	Sherwin Williams DM1200 AC Lacquer - Satin (40) - 5.2L

## TA 4500 PU Moisture Cure Lacquer

One component High Gloss Polyurethane finish

Sherwin Williams® 1K lacquer is a moisture cured polyurethane coating producing a finish with excellent durability and a high level of resistance to household liquids. It is not suitable for use on gymnasium or sports floors.



### TECHNICAL DATA - (based on 20°C & 60% RH)

Drying time (hours)	3
Light traffic (hours)	8
Fully cured (days)	3
Packaging Size	5L
Storage in original, unopened containers stored in a cool, dry place	5 Years

Code	Product
F2014012	Sherwin Williams TA4500 Gloss (80) PU Lacquer - 5 Litre
F2014013	Sherwin-Williams PU Matting base (Satin Finish) - 375ml



# Blanchon

## Blanchon



### Renovation Lacquer

Two component floor renovation lacquer

BLANCHON RENOVATION LACQUER provides long-term renovation for worn and tarnished lacquered, oiled, pre-varnished and pre-oiled wood flooring and laminate, without sanding down to bare or replacing the coating.

Its unique formula with its strong wetting power and the addition of a hardener guarantee perfect adhesion and high resistance to traffic and chemical attack.

Quick and easy to use: it is applied directly without an adhesive primer. Its simplified preparation and 1-coat application enable the rapid return to use of the site.



#### TECHNICAL DATA - (based on 20°C & 60% RH)

Drying time (minutes)	45
Sanding / recoating time (hours)	3
Light traffic (hours)	24
Fully cured (days)	5-7
Packaging size	2.75L
Storage, unopened containers in a cool, dry place	12 Months

Code	Product
F2016000	Blanchon 2 Pack Renovation Lacquer Matt (15) 2.75L
F2016001	Blanchon 2 Pack Renovation Lacquer Satin (30) 2.75L

# Installation & Finishing Accessories

## Primer SF

Primer SF is a single component polyurethane moisture-cure primer for treating subfloors before laying wood floors. It offers a much higher coverage and does not increase screed humidity.



- 60 / m<sup>2</sup> Coverage - 1 coat
- Solvent & water free
- Compatible with Grip tight 50
- Low level viscosity
- Excellent penetration
- Suitable for under floor heating
- Can be used to max 0.5% CM for anhydrite screed (One coat)
- Can be used to max 4% CM for cement screed

Code	Product
F1210011	Primer SF - 12kg

## Grip Tight 50 Pro Plus

Grip Tight 50 Pro Plus is a single component elastomeric adhesive suitable for the glue down installation of solid and engineered flooring. It is moisture resistant and remains flexible.



- 14kg
- Approx 10 / m<sup>2</sup> Coverage with 5.5mm spreader
- Solvent Free
- One component ready to use
- Can be wet laid
- Suitable for under floor heating
- Working time approx. 45mins @18-20°C
- Compatible with Primer SF

Code	Product
F1210007	Grip Tight 50 Pro Plus 14kg

## V-Notched Trowel

5.5mm spreader for even distribution of Grip Tight 50 Pro Plus.



Code	Product
F1810006	V-Notched Trowel



## Saicos Ecoline Maintenance Set

Includes telescopic handle, two wipers and 2 x replacement cloths.

Telescopic handle (0,90 - 1,40 m) including 2 special wipers.  
Especially developed for these maintenance products:

Ecoline Wash Care  
Ecoline Magic Cleaner  
Ecoline Wax Care

Code	Product
F2015056	Saicos Ecoline Maintenance Set



## Junckers Aqua Roller 25cm 15mm x 20mm x 1m

For application of water based lacquers.

Code	Product
F2011031	Junckers 25cm Aqua Roller



## Junckers Handle 15mm x 20mm x 1m

For use with Aqua Roller. Fits with telescopic handle.

Code	Product
F2011030	Junckers Handle



## Bitumen Paper AF1 15mm x 20mm x 1m

To help close gaps when installation laminate and hardwood flooring.

Code	Product
F1011001	Bitumen Paper AF1

The logo consists of a solid red square. Inside the square, the word "Whiteriver" is written in white. The "W" is stylized with a small white triangle pointing upwards from its left vertical stroke.

**Whiteriver**

wood for living

**Unfinished  
Products**





## Prestige Cambridge Oak

**220 x 18 x 2200mm**

Code: D1412140

Finish: Unfinished

Grading Type: Universal

Pack Size: 1.94m<sup>2</sup>

Top Layer: 4mm Engineered

Bevel: Micro Bevel

Code	Product
D1412140	Prestige 220 x 18mm Cambridge Oak 1.94m <sup>2</sup>



## Heritage Oak Rien

**190 x 20 x 1900mm**

Code: D1411022

Finish: Unfinished

Grading Type: Universal

Pack Size: 1.805m<sup>2</sup>

Top Layer: 6mm Engineered

Bevel: Micro Bevel

Code	Product
D1411022	Heritage 190 x 20mm Oak Rien 1.805m <sup>2</sup>



## Heritage Oak Sorrento

**190 x 20 x 1900mm**

Code: D1411030

Finish: Unfinished

Grading Type: Vintage, Hand brushed

Pack Size: 1.805m<sup>2</sup>

Top Layer: 6mm Engineered

Bevel: Micro Bevel

Code	Product
D1411030	Heritage 190 x 20mm Oak Sorrento 1.805m <sup>2</sup>





## Charleston Oak (L&R)

**120 x 18 x 600mm**

Code: D1610530

Finish: Unfinished

Grading Type: Rustic A / Nature

Pack Size: 0.72m<sup>2</sup>

Top Layer: 4mm Engineered

Bevel: Micro Bevel

Code	Product
D1610530	Herringbone 120 x 18mm Charleston Oak 0.72m <sup>2</sup>



## European Oak (L&R)

**70 x 20 x 280mm**

Code: D1620114

Finish: Unfinished

Grading Type: Nature / Pine mix

Pack Size: 0.98m<sup>2</sup>

Top Layer: 6mm Engineered

Bevel: Square Edge

Code	Product
D1620114	Herringbone 70 x 20mm European Oak 0.98m <sup>2</sup>

## Installation Accesories



## Cork Expansion Strip

To control the natural movement of the flooring. For use with laminate, engineered and solid wood flooring.

Code	Product
F1012002	Cork Expansion Strips 10mm x 15mm x 1m (30 pcs)
F1012004	Cork Expansion Strips 15mm x 20mm x 1m (30 pcs)



## Joining Profiles

Brass Joining Profile. Available in 3m lengths  
15mm high x 3mm thick  
14mm high x 5mm thick

Code	Product
K1410165	Brass Joining Profile 15 x 3mm x 3m Pre Drilled
K1410166	Brass Joining Profile 14 x 5mm x 3m Pre Drilled



**Solid Oak Woodblock**  
**Nature / Rustic**  
**70 x 21 x 280mm**

Code: E1010024  
 Finish: Unfinished  
 Grading Type: Nature / Rustic  
 Pack Size: 0.98m<sup>2</sup>

Code	Product
E1010024	Solid Oak Woodblock Nature / Rustic 0.98m <sup>2</sup>



**Solid Oak Woodblock**  
**Prime**  
**70 x 21 x 280mm**

Code: E1010025  
 Finish: Unfinished  
 Grading Type: Prime  
 Pack Size: 0.98m<sup>2</sup>  
 Bevel: Square Edge

Code	Product
E1010025	Solid Oak Woodblock Prime 0.98m <sup>2</sup>



**Solid Merbau Woodblock**  
**Prime**  
**70 x 18 x 350mm**

Code: E1010001  
 Finish: Unfinished  
 Grading Type: Prime  
 Pack Size: 0.98m<sup>2</sup>  
 Bevel: Square Edge

Code	Product
E1010001	Solid Merbau Woodblock Prime 0.98m <sup>2</sup>







## Solid Honduras Pitch Pine

**178 x 19 x RLmm**

Code: E1211001

Finish: Unfinished

Grading Type: Rustic / Character

Pack Size: Random

Bevel: Square Edge

Code	Product
E1211001	Solid Honduras Pitch Pine 178 x 19mm



## Solid 2 1/4" Canadian Maple

**57 x 19 x RLmm**

Code: D1615040

Finish: Unfinished

Grading Type: Nature / Select & Better

Pack Size: 1.86m<sup>2</sup>

Bevel: Square Edge

Code	Product
E1411006	Solid 57 x 19mm Canadian Maple 1.86m <sup>2</sup>

## Installation Accesories



## Whiteriver Solid Stair Nosing Unfinished

30 x 48 x 2400MM (to suit 13, 14, 18, 19mm)

Designed to match all our plank ranges

The finishing touch to your floor

Code	Product
F1625125	Solid Oak Nosing Unfinished 48 x 30 x 2400mm - 13mm Range
F1625126	Solid Oak Nosing Unfinished 48 x 30 x 2400mm - 14mm Range
F1625127	Solid Oak Nosing Unfinished 48 x 30 x 2400mm - 18mm Range
F1625128	Solid Oak Nosing Unfinished 48 x 30 x 2400mm - 19mm Range



## Euro Step Stair Nosing 320

Commercial Two Piece

Code: F1625043

Colour: Silver

Length: 2700mm

Floor Thickness: 7mm - 16mm

Code	Product
F1625043	Eurostep Silver Stair Nosing 27 x 2700mm



Products optimised for their purpose seed not only beautiful results, but also exemplary operational experiences. As a result, SAIT's abrasive inventions are backed to the hilt by premium materials and manufacturing methods, as well as ISO 9001 and ISO 14001 certification creating abrasives that deliver. Coupled with personalised service experiences that you'll want to repeat time and again, SAIT products have become synonymous with customer satisfaction the world over.

From the refurbishment of old items through to the crafting of the new, SAIT's range of products for wood helps artisans and volume producers alike achieve the results they desire. Sanding and fine finishing are both catered for with a variety of types, grits and technologies.


**200 x 750mm Belts Cloth Backed (8" Belt Sanders)**

Code	Product	Qty. Per Pack
F2610023	24G - Zirconium	10 No
F2610030	36G - Alu oxide / Zirconium Mix	10 No
F2610024	40G - Alu oxide / Zirconium Mix	10 No
F2610028	60G - Alu oxide / Zirconium Mix	10 No
F2610031	80G - Alu oxide / Zirconium Mix	10 No
F2610032	100G - Aluminium oxide	10 No
F2610033	120G - Aluminium oxide	10 No

**250 x 750mm Belts Cloth Backed (10" Belt Sanders)**

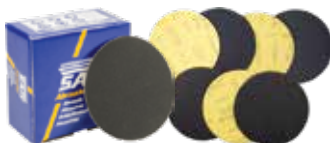
Code	Product	Qty. Per Pack
F2610034	24G - Zirconium	10 No
F2610035	36G - Alu oxide / Zirconium Mix	10 No
F2610036	40G - Alu oxide / Zirconium Mix	10 No
F2610037	60G - Alu oxide / Zirconium Mix	10 No
F2610038	80G - Alu oxide / Zirconium Mix	10 No
F2610039	100G - Alu oxide	10 No
F2610040	120G - Alu oxide	10 No

**200 x 551mm Belts Cloth Backed (8" Belt Sanders)**

Code	Product	Qty. Per Pack
F2610077	24G - Zirconium	10 No
F2610078	36G - Alu oxide / Zirconium Mix	10 No
F2610079	40G - Alu oxide / Zirconium Mix	10 No
F2610083	60G - Alu oxide / Zirconium Mix	10 No
F2610080	80G - Alu oxide / Zirconium Mix	10 No
F2610081	100G - Aluminium oxide	10 No
F2610082	120G - Aluminium oxide	10 No

**200 x 50mm Rolls Paper Backed (8" Drum Sanders)**

Code	Product	Qty. Per Pack
F2610041	24G - Silicon Carbide	1 No
F2610042	36G - Silicon Carbide	1 No
F2610043	40G - Silicon Carbide	1 No
F2610044	60G - Silicon Carbide	1 No
F2610045	80G - Silicon Carbide	1 No
F2610046	100G - Silicon Carbide	1 No
F2610047	120G - Silicon Carbide	1 No

**150mm Discs Velcro Backed (6" Edge Sanders)**

Code	Product	Qty. Per Pack
F2610050	24G - Silicon Carbide	<b>25 No*</b>
F2610051	36G - Silicon Carbide	50 No
F2610052	40G - Silicon Carbide	50 No
F2610029	60G - Silicon Carbide	50 No
F2610053	80G - Silicon Carbide	50 No
F2610025	100G - Silicon Carbide	50 No
F2610054	120G - Silicon Carbide	50 No

**180mm Discs Velcro Backed (7" Edge Sanders)**

Code	Product	Qty. Per Pack
F2610064	24G - Silicon Carbide	<b>25 No*</b>
F2610065	40G - Silicon Carbide	50 No
F2610066	60G - Silicon Carbide	50 No
F2610067	80G - Silicon Carbide	50 No
F2610068	100G - Silicon Carbide	50 No
F2610069	120G - Silicon Carbide	50 No

**150mm Discs 9 Hole Velcro Backed (Festool Machines)**

Code	Product	Qty. Per Pack
F2610055	40G - Aluminium oxide	50 No
F2610056	60G - Aluminium oxide	50 No
F2610026	80G - Aluminium oxide	50 No
F2610057	100G - Aluminium oxide	50 No
F2610058	120G - Aluminium oxide	50 No

**95mm Corner Discs 6 Hole Velcro Backed (Festool Machines)**

Code	Product	Qty. Per Pack
F2610070	40G - Aluminium oxide	100 No
F2610071	60G - Aluminium oxide	100 No
F2610027	80G - Aluminium oxide	100 No
F2610072	100G - Aluminium oxide	100 No

**61mm Corner Discs Velcro Backed (Flip Machines)**

Code	Product	Qty. Per Pack
F2610092	40G - Zirconium	50 No
F2610017	60G - Zirconium	50 No
F2610018	80G - Zirconium	50 No
F2610084	100G - Zirconium	50 No

**406mm Sanding Pads (16" Buffing Machines)**

Code	Product	Qty. Per Pack
F2610073	Red	10 No
F2610074	Black	10 No
F2610075	Green	10 No
F2610076	White	10 No
F2610005	Beige	10 No

**203mm Sanding Pads (Trio Machines)**

Code	Product	Qty. Per Pack
F2610012	Beige / White (For screening)	10 No

**406mm Sanding Screens (16" Buffing Machines)**

Code	Product	Qty. Per Pack
F2610085	80G - Silicon Carbide	10 No
F2610048	100G - Silicon Carbide	10 No
F2610049	120G - Silicon Carbide	10 No
F2610086	150G - Silicon Carbide	10 No

**203mm Sanding Screens (Trio Machines)**

Code	Product	Qty. Per Pack
F2610010	80G - Silicon Carbide	12 No
F2610011	100G - Silicon Carbide	12 No
F2610021	120G - Silicon Carbide	12 No
F2610087	150G - Silicon Carbide	12 No
F2610090	180G - Silicon Carbide	12 No
F2610091	220G - Silicon Carbide	12 No

**Saicos Abrasive Mat**

Code	Product	Qty. Per Pack
F2015061	Renovation Pad Maroon 410mm - 280G	10 No





**LÄGLER offers the most comprehensive and highest quality range of machines for the professional sanding of wooden floors and the preparation of subfloors.**

For more than 50 years, floor sanding machines represent functional and ergonomic perfection. They are easy to operate and easy to maintain.

At the same time, they meet the environmental and safety related requirements. The wood dust exposure of the machines was minimized as a result of focused research activities, while still providing the user unlimited mobility for sanding in confined areas. The Lägler standard offers integrated dust collection systems that remain significantly below the regulated wood dust exposure.

All over the world, wood floor contractors rely on Lägler floor sanders and they take advantage of innovative concepts, unmatched solutions, first-class product quality, highest efficiency and perfect work results.

For the benefit of its customers, Lägler continuously makes significant investments in basic research, training and consulting services as well as in future oriented manufacturing processes to protect and expand the technology advances of its machines.

**LÄGLER - the single source for floor sanding machines, abrasives and application engineering.**





## HUMMEL - Belt Sander

### Legendary Technology, Ultra Reliable, 98% Dust Free.

The HUMMEL® belt sanding machine is the best-known floor sanding machine in the world, with thousands of models in use across the globe. Mature, long-life technology for perfect sanding quality and enormous machine power have made it the undisputed number one system for parquet floor finishing for decades. The combination of an aggressive sanding drum, three-stage drum pressure regulation and belt tensioning device with integrated automatically regulated belt guidance guarantees quick work and optimum sanding quality.

- extremely economical,
- belt can be changed in seconds,
- impressive working quality,
- low-fatigue work,
- fail-safe and sturdy design and optimised dust extraction.

### Ideal use:

Perfect and economical sanding of both small and large areas even in critical areas such as mosaic inlays with soft wood.

### TECHNICAL DATA

<b>Single-phase AC motor with no-voltage release and thermal overload protection</b>	230 V / 50 CPS / 2.2 kW
<b>Fuse protection min.</b>	16 Am- peres
<b>Sanding drum width</b>	200 mm
<b>Sanding drum speed</b>	2400 rpm
<b>Sanding belt dimensions</b>	200 x 750 mm
<b>Machine weight</b>	79 kg

\*Prices subject to change without notice.

Code	Product
<b>F2210001</b>	<b>Hummel - Belt Sanding Machine</b>



# HUMMEL - Accessories

## Milling Drum



When it comes to challenging renovations, the milling drum, is the ideal tool. When used correctly, up to 500 m<sup>2</sup> per cutting side, i.e. up to 2000 m<sup>2</sup> with one indexable carbide insert, can be milled. Designed for the effortless and economical renovation of old wooden floors heavily soiled by residuals of varnishes and carpet adhesives.

Code	Product
F2410194	HUMMEL - Milling Drum

## Upgrade Kit LED Light



With the robust LED work light problems due to poor lighting conditions belong to the past. For running the LED work light there is no external power supply needed. Any HUMMEL® built after 1990 can be retrofitted with the work light. For safety reasons, may only be carried out by a qualified electrician!

Code	Product
F2410200	HUMMEL - Upgrade LED Light

## Paddle System



The ergonomic paddle lever together with an adjustable quick lift plate and a larger ball-head ensure a completely new sanding experience. For machines built after 1990, it is possible to retrofit either the entire system or only the paddle lever.

Code	Product
F2410214	HUMMEL - Paddle System

## Safety Belt



The belt has an integrated back padding. The waist size can be adjusted flexibly. If necessary, the belt can be quickly separated from the machine by a safety device.

Code	Product
F2410077	HUMMEL - Safety Belt

## Carrying Handle



The carrying handle makes it easier to carry the undismantled HUMMEL® in pairs, especially over stairs and other obstacles. It is simply hooked onto the retaining bracket at the front of the machine housing.

Code	Product
F2410142	HUMMEL - Carrying Handle



## FLIP - Edge and Corner Sander

**Super Aggressive, Quality Performance, 99% Dust Free.**

FLIP means maximum efficiency for perfect, comfortable sanding of edges and corners without shoulders. The heart of the FLIP is the powerful motor with its enormous suction power and corresponding reserves. The unexpectedly handy weight of the FLIP is due to the abrasion-proof, glass-fibre reinforced plastic used in the motor casing, handle and attachment.

Like all Lägler machines, the FLIP has been designed down to the last detail with ergonomics, simple handling and maintenance in mind.

The FLIP has the “wood dust test” quality mark, making it the only edge and corner sanding machine in the world to work almost dust-free. There are 2 attachment lengths and 1 corner attachment available.

### **Ideal use:**

Predestined for perfect and comfortable sanding without shoulders of difficult edge and corner areas.

### **TECHNICAL DATA**

<b>Single-phase AC motor with no-voltage release and thermal overload protection</b>	230 V / 50 CPS / 1.8 kW
<b>Fuse protection min.</b>	10 Am- peres
<b>Sanding disc diameter</b>	150 mm
<b>Sanding disc speed under load</b>	3100 rpm
<b>Sanding disc speed corner attachment under load</b>	7750rpm
<b>Machine weight</b>	79 kg

\*Prices subject to change without notice.

Code	Product
<b>F2210003</b>	<b>Flip - Edge Sanding Machine</b>

# FLIP - Accessories



## Milling Attachment

The disc of the milling attachment is equipped with diamond cutting edges. Rough work at the edge area can be carried out quickly and without much effort. Residues of felt, foam and plaster as well as lubricating varnish and paint residues on wooden floors can be removed easily with this Milling Attachment.

Code	Product
F2410193	FLIP - Milling Attachment



## Short Attachment

This attachment is ideal for working on the edge area. Sanding discs can be used both with a solid velcro and for tensioning. The machine is therefore particularly handy and very easy to operate.

Code	Product
F2410101	FLIP - Short Attachment



## Corner Attachment 225mm

Finishing the corners of wooden floors is usually very time-consuming. With the FLIP® corner attachment, for which only velcro discs are available, this work can be carried out in a very short time.

Code	Product
F2410001	FLIP - Corner Attachment



## Long Attachment 315mm

Due to its length this attachment is particularly suitable for sanding under obstacles (such as radiators, shelves etc.). Sanding discs can be used both with a solid velcro and for tesioning.

Code	Product
F2410002	FLIP - Long Attachment



## Working Light

This accessory for the FLIP® illuminates the working area. The surface quality of the wooden floor can be checked while sanding. The focusable LED lamp is removable and can also be used as a torch independently of the machine.

Code	Product
F2410257	FLIP - Working Light



## TRIO - Three Disc Sander

### Perfect Finish, Powerful & Versatile, 99% Dust Free.

The TRIO is the versatile and powerful floor sanding machine in floor finishing.

From thorough sub-floor treatment via renovation work on pre-finished parquet floors to perfect fine and intermediate sanding, the three disc sanding machine covers a comprehensive spectrum.

The powerful motor has been optimally designed for both the heavy-duty and/or sensitive requirements of these areas of application. The integrated, sensor-monitored dust extractor and well thought-out filter system guarantee almost dust-free work. Disposal of the dust bag is also dust-free. Basic equipment ex factory: Universal sanding disc and additional 8 kg weight.

### Ideal use:

Excellent for floor finishing and renovating solid wood, engineered, cork and stained floors. For cleaning and polishing as well as for the dry treatment of screed and sub-floors. Only suitable for dry processing. Suitable for sanding of Pandomo® floors.

### TECHNICAL DATA

<b>Single-phase AC motor with no-voltage release and thermal overload protection</b>	230 V / 50 CPS / 1.8 kW
<b>Fuse protection min.</b>	16 Am- peres
<b>Number of sanding discs / brushes</b>	3
<b>Sanding disc speed under load</b>	200 mm
<b>Sanding disc speed corner attachment under load</b>	600rpm
<b>Machine weight</b>	78 kg

\*Prices subject to change without notice.

Code	Product
<b>F2210004</b>	<b>Trio - Three Disc Finishing Sanding Machine</b>

# TRIO - Accessories



## Diamond Sanding Disc

With the new diamond sanding discs specially developed for the TRIO, you can now also remove stubborn varnish and old layers of paint, adhesive and carpet backing from wooden floors.

Code	Product
F2410258	TRIO - Diamond Sanding Disc (Set of 3)



## LED Work Light

With the robust LED work light, the entire working area in front of the TRIO can be illuminated. Any TRIO® can be retrofitted with the work light. For safety reasons, may only be carried out by a qualified electrician!

Code	Product
	TRIO - Retrofit LED Work Light (Please contact office for more details)



## Brushing Discs

With the brushing discs specially designed for the TRIO, natural, strikingly structured surfaces can be created. This gives the wooden floor a rustic appearance. Available in Nylon, Brass & Stainless Steel depending on type of wood and desired brush depth.

Code	Product
F2410259	TRIO - Nylon Brushing Disc (Set of 3)
F2410220	TRIO - Brass Brushing Disc (Set of 3)
F2410221	TRIO - Stainless Steel Brushing Disc (Set of 3)



## Milling Discs

The milling disc, which is made of aluminium, can be equipped with three or six cutter holders, depending on the desired aggressiveness. Each holder carries a carbide indexable insert.

Code	Product
F2410195	TRIO - Milling Discs



## Dust Bag System

The TRIO now has a new dust bag system in which the MultiClip used has been replaced by a sealing fixing ring. This makes changing the dust bag even easier and faster than before. The corresponding dust bags have a larger capacity. All TRIO Machines pre October 2019 can be retrofitted with this system.

Code	Product
F2410218	TRIO - Dust Bag Conversion Kit



## ATTENTION!

Please include your machine's serial number in all inquiries and spare parts orders so that we can provide you with the correct spare parts.



The motor type plate of HUMMEL is located on the switch box of motor (Fig. 5).  
The following technical data are specified on the motor type plate (Fig. 6):

1. Manufacturer
- 2. Serial number of machine (Mach. - No.)**
3. Year of manufacture (Year)
4. Motor size (Type)
5. Required mains voltage in volt (V)
6. Current consumption in ampere (A)
7. Motor frequency in CPS (Hz)
8. Motor power in kilowatt (KW)
9. Motor speed in 1/min (Rpm)
10. Post factor in cosine phi (cos)
11. Insultation class (Insul. Cl.)
12. Protection class (Prot. Cl.)
13. Type of current
14. Country of manufacture

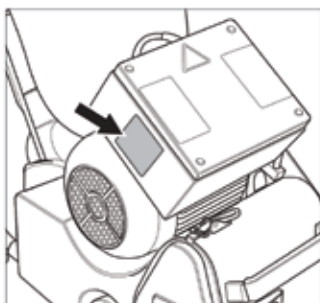


Fig. 5 Motor type plate on switch box.

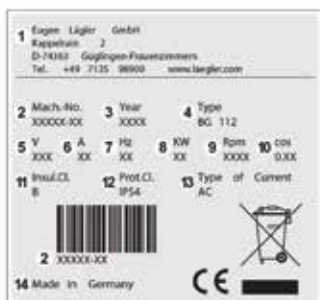
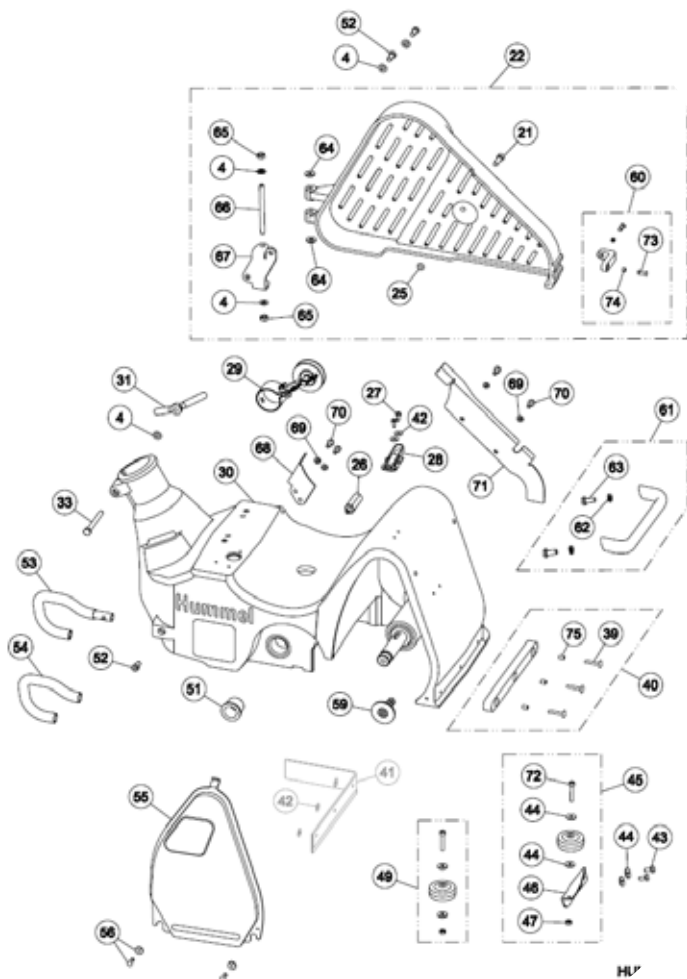


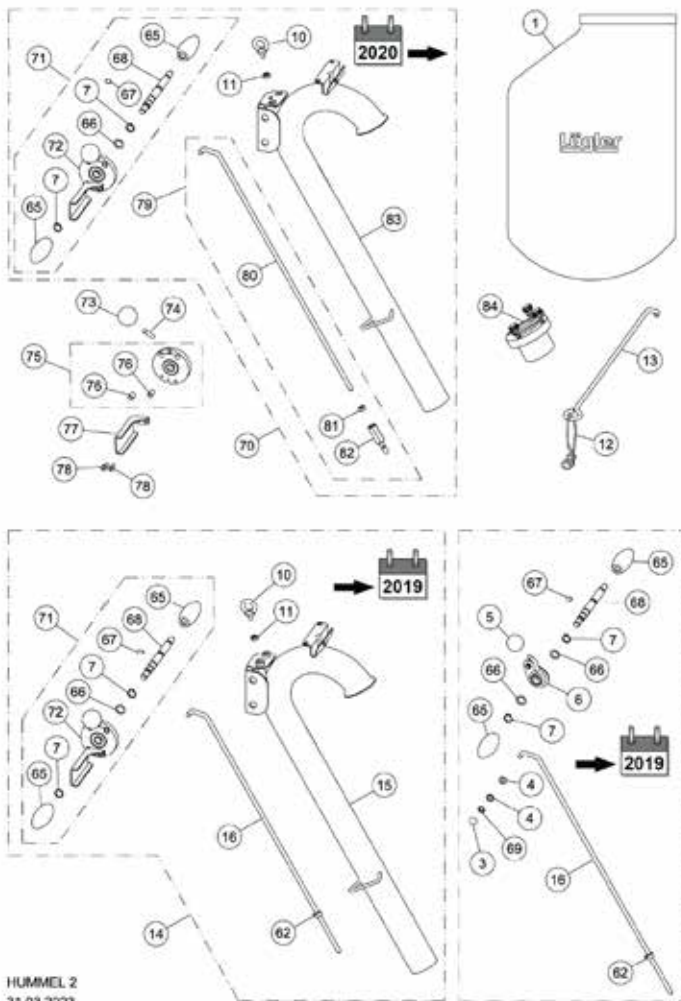
Fig. 6 Data on motor type plate.



Item	Part Number	Product
4	0125.1008.000	Washer DIN 125 8.4 (M8)
21	0912.1008.025	Screw DIN 912 M8x25
22	100.50.00.200	Belt guard, complete
	100.50.00.100	Belt guard, complete
25	000.01.40.001	O-ring
26	100.50.04.105	Screw stud
27	100.50.04.105	Screw DIN 7500 C M5x12
28	100.01.05.105	Cover fastener

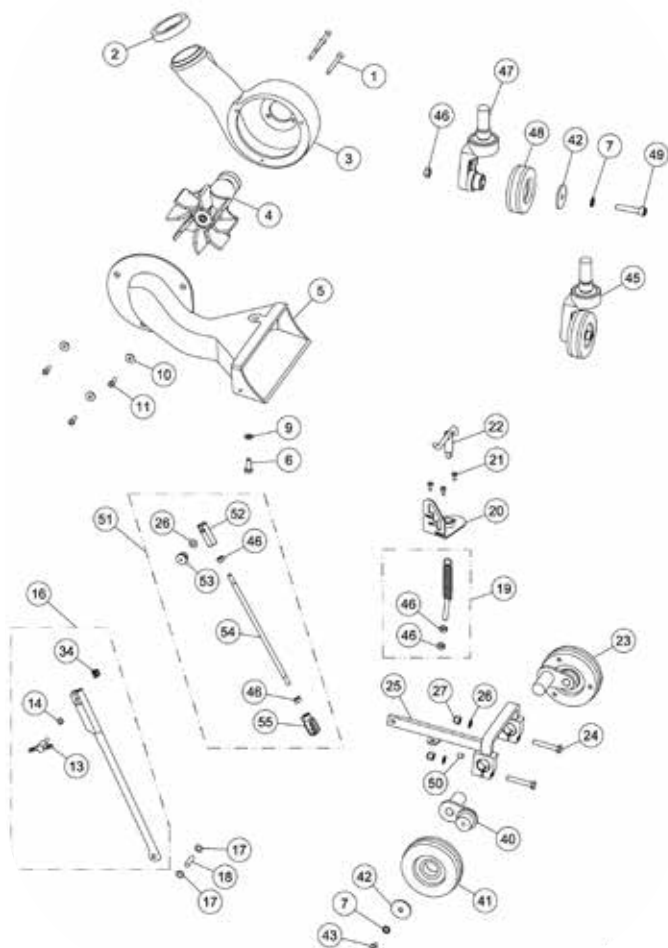


Item	Part Number	Product
29	100.58.00.200	Belt tensioner, complete
30	100.01.00.200	Machine housing / sanding shaft and bearings 09/22
	100.01.00.100	Machine housing / sanding shaft and bearings 08/22
31	000.20.45.081	Wing nut
33	0931.1008.075	Screw DIN 931 M8x75
39	7337.1004.830	Rivet DIN 7337 4.8x30
	7 337 .1005 .033	Rivet DIN 7337 5x33
40	100.01.01.100	Bumper felt
41	100.01.02.100	Sealing felt (for HUMMEL until 08/2022)
42	9021.1005.000	Washer DIN 9021 5.3 (MS)
43	0933.1006.014	Screw DIN 933 M6x14
44	9021.1006.000	Washer DIN 9021 6.4 (M6)
45	100.60.00.300	Wall-protecting roller with holder
46	100.60.01.100	Holder for wall-protecting roller
47	0934.1006.000	Nut DIN 934 M6
49	100.60.02.200	Wall-protecting roller
51	000.43.10.252	Plastic bushing
52	7984.1008.016	Screw DIN 7984 M8x16
53	100.44.00.100	Safety guard, complete
54	100.44.01.100	PVC tube
55	100.01.03.100	Side cover
56	100.01.08.200	Collar nut, complete
59	100.01.30.100	Guide roller, complete
60	100.50.05.100	Bumper guard with rivets
61	100.33.01.200	Bracket complete
	100.33.02.100	Grip of bracket (for HUMMEL until 2019)
62	0127.1008.000	Spring washer DIN 127 8 (M8)
63	0933.1008.020	Screw DIN 933 M8x20
64	000.10.10.089	Washer
65	0980.1008.000	Nut DIN 980 M8
66	100.50.02.200	Hinge bolt of belt guard
67	100.50.01.200	Bearing bracket for belt guard
68	100.42.02.200	Protective plate, small
69	0127.1006.000	Spring washer DIN 127 6 (M6)
70	7500.1006.016	Screw DIN 7500 C M6x16
71	100.42.01.200	Protective plate, large (for HUMMEL as from 09/2022)
72	0912.1006.035	Screw DIN 912 M6x35
73	7337.1005.016	Rivet DIN 7337 5x16 Al
74	350.03.22.105	Bush for bumper guard for belt guard



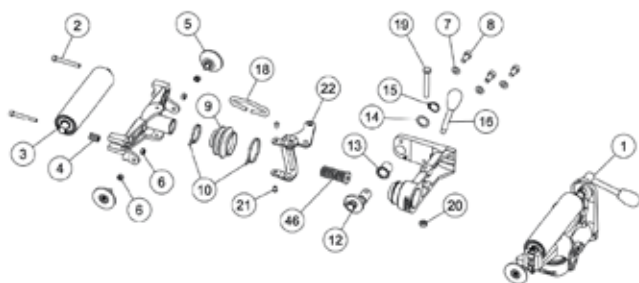
Item	Part Number	Product
1	100.00.80.105	HUMMEL dust bag
3	000.17.21.081	Fixing cap
4	0125.1008.000	Washer DIN 125 (M8)
5	000.20.56.351	Ball knob
6	100.20.18.200	HUMMEL Lever
7	0471.0015.000	Circlip DIN 471 15x1
10	0580.1008.00	Thread eye DIN M8
11	0980.1008.000	Nut DIN 980 MS
12	00.000.41.002	Strain relief ring

Item	Part Number	Product
13	100.20.26.100	Cable support
14	100.20.00.200	Guide tube, complete
	100.20.00.200	Guide tube USA, complete
	100.21.00.200	Guide tube long, complete
15	100.20.01.200	Guide tube (HUMMEL 08/22)
	102.20.01.200	Guide tube USA (HUMMEL 08/22)
16	100.20.24.100	Adjusting ring, complete
	100.20.90.200	Upper rod for sinistrals
62	100.20.23.200	Adjusting ring
65	000.20.31.351	Handle
	000.20.01.001	Wood Handle
66	0988.0015.005	Washer DIN 988 15x21x0.5
67	0914.0008.012	Grub screw DIN 914 M8
68	100.20.17.200	Axle for handle
69	000.17.20.081	Quick-fixing -fastener
70	100.20.00.300	Guide tube, complete
	102.20.00.300	Guide tube USA, complete
	100.21.00.300	Guide tube long, complete
71	100.20.38.100	Conversion kit Paddle
72	100.20.40.100	Lowering lever
73	000.20.56.401	Ball knob
74	100.20.45.100	Bar ball knob
75	100.20.42.100	Disk lowering lever
76	000.43.11.081	Plastic bushing
77	100.20.46.100	Plate quick lift
78	7985.1006.816	Screw DIN 7985 M6x16
79	100.20.50.100	Upper rod, complete
	100.21.50.100	Upper rod long, complete
80	00.20.51.100	Upper rod
	100.21.51.100	Upper rod long
81	0934.1008.000	Nut DIN 934 MS
82	100.20.52.100	Setting sleeve
83	100.20.01.300	Guide tube
	102.20.01.300	Guide tube USA
84	100.14.10.100	Suction adapter for dust collector at guide tube

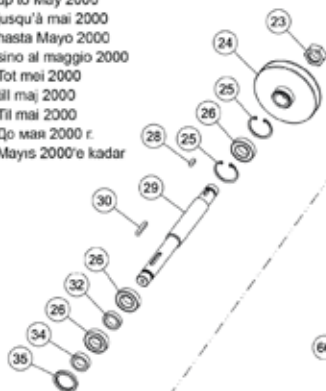


Item	Part Number	Product
1	0965.1006.870	Screw DIN 965 M6x70
2	100.08.01.300	Sealing ring (from 09/2022)
	100.08.01.200	Sealing ring (until 08/2022)
3	100.08.00.200	Fan housing (from 09/2022)
	100.08.00.100	Fan housing (until 08/2022 + for ELF)
4	100.10.00.200	Fan insert, complete
5	100.14.00.200	Intake duct
6	0933.1008.022	Screw DIN 933 M8x22
7	6797.1008.000	Washer DIN 679718.4 (M8)

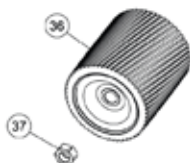
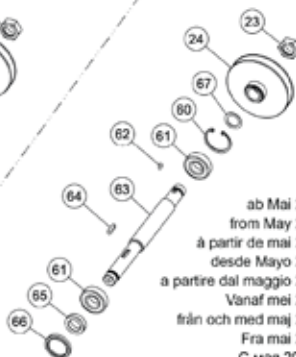
Item	Part Number	Product
9	0127:1008.000	Spring washer DIN 127 8 (M8)
10	9021:1006.000	Washer DIN 9021 6.4 (M6)
11	0912:1006.018	Screw DIN 912 M6x18 (from 09/2022)
	0912:1008.018	Screw DIN 912 M8x18
13	000.20.46.062	Wing screw
14	0125:1006.000	Washer DIN 125 6.4 (M6)
16	100.04.09.100	Lower rod, complete (until 2019 + for ELF)
17	000.17.20.081	Quick-fixing-fastener
18	100.04.01.200	Pivot pin
19	100.04.25.100	Spring with screw, complete
20	100.04.06.200	Notch plate
21	7500:1005.012	Screw DIN 7500 C M5x12
22	100.04.02.100	Spring tensioner, complete
23	100.05.00.200	Lateral wheel, complete
24	0931:1008.050	Screw DIN 931 M8x50
25	100.04.60.100	Lifting fixture (black, from 09/2022)
	100.04.50.100	Lifting fixture (green, from 2020 until 08/2022)
	100.04.00.100	Lifting fixture (green, until 2019 + for ELF)
26	0125:1008.000	Washer DIN 125 8.4 (M8)
27	6330:1008.000	Nut DIN 6330 M8
34	000.50.12.061	Nut
40	100.05.04.200	Wheel arm
41	100.05.29.100	Lateral wheel (as from 06/1999)
42	000.10.10.085	Washer
43	7984:1008.012	Screw DIN 7984 M8x12
45	100.18.00.300	Rear wheel, complete
46	0934:1008.000	Nut DIN 934 M8
47	100.18.18.300	Tail axle housing, complete
48	100.18.29.105	Rear wheel (as from 2002)
	100.18.09.200	Rear wheel (until 2001)
49	0912:1008.040	Screw DIN 912 M8x40
50	0914:0008.012	Grub screw DIN 914 M8x12
51	100.04.58.100	Lower rod, complete (for HUMMEL as from 2020)
52	100.04.56.100	Snap piece (for HUMMEL as from 2020)
53	000.20.15.004	Stop bolt (for HUMMEL as from 2020)
54	100.04.55.100	Lower rod (for HUMMEL as from 2020)
55	000.25.11.901	Fork joint (for HUMMEL as from 2020)



bis Mai 2000  
up to May 2000  
jusqu'à mai 2000  
hasta Mayo 2000  
sino al maggio 2000  
Tot mai 2000  
till maj 2000  
Til mai 2000  
До мая 2000 г.  
Mayis 2000'e kadar

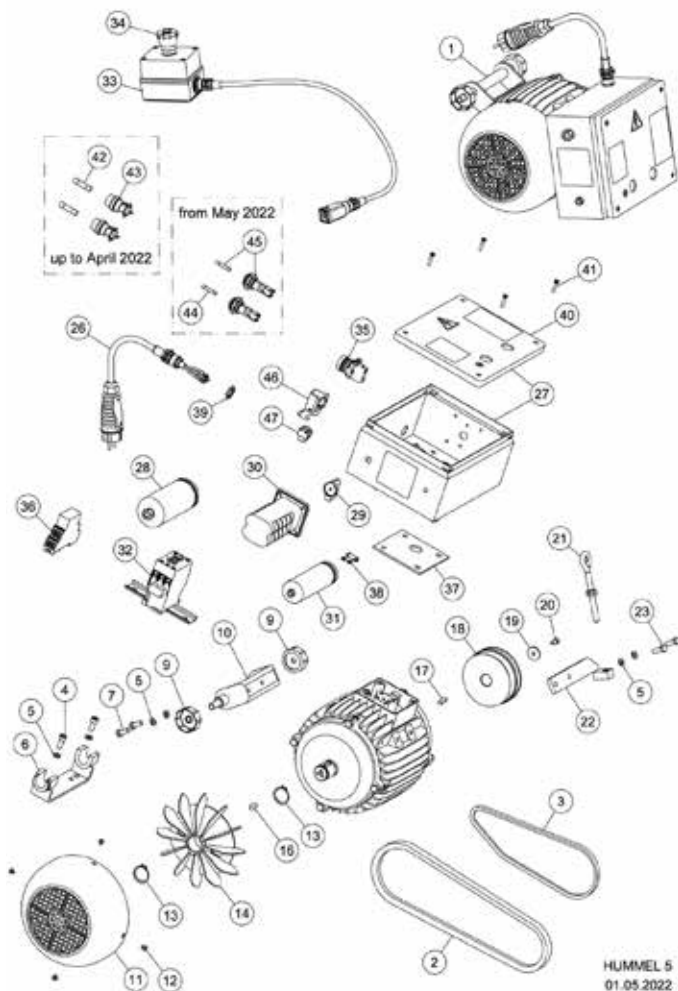


ab Mai 2000  
from May 2000  
à partir de mai 2000  
desde Mayo 2000  
a partire dal maggio 2000  
Vanaf mei 2000  
från och med maj 2000  
Fra mai 2000  
C mai 2000 r.  
Mayis 2000'den itibaren



HUMMEL 4  
01.06.2013

Item	Part Number	Product
1	100.45.00.100	Drive unit, complete
2	0912.1006.050	Screw DIN 912 M6x50
3	100.45.12.105	Tensioning roller
4	000.31.13.021	Pressure spring
5	100.45.01.105	Guide roller
6	0980.1006.000	Nut DIN 980 M6
7	0125.1008.000	Washer DIN 125 8.4 (MB)
8	0912.1008.018	Screw DIN 912 M8x18
9	100.45.81.105	Collar
10	000.61.10.363	Cable tie
12	100.45.20.100	Crank
13	100.45.24.105	Bearing bush
14	0988.0018.005	Washer DIN 988 18x25x0.5
15	0471.0018.000	Circlip DIN 47118x1.2
16	000.20.32.104	Operating lever
18	100.45.17.100	Clip
19	0931.1008.060	Screw DIN 931 M8x60
20	0980.1008.000	Nut DIN 980 MB
21	100.45.61.205	Screw
22	100.45.37.100	Double arm, complete
23	100.02.05.100	Nut, right-hand thread
24	100.36.00.100	V-belt pulley
25	0472.0047.000	Circlip DIN 472 47x1.75
26	6005.0025.205	Ball bearing
28	6885.0606.018	Parallel key DIN 6885 6x6x18
29	100.02.01.100	Sanding shaft
30	6885.0606.040	Parallel key DIN 6885 6x6x40
32	100.02.04.105	Spacer ring
34	100.02.03.105	Slide ring
35	000.11.35.102	Shaft seal
36	120.40.00.100	Sanding drum HUMMEL
	120.41.00.100	Sanding drum HUMMEL, hard rubber cover
37	100.02.06.100	Nut, left-hand thread
46	100.45.45.100	Pressure spring
60	0472.0052.000	Circlip DIN 472 52x2
61	6205.0025.205	Ball bearing
62	6885.0606.010	Parallel key DIN 6885 6x6x10
63	100.02.01.200	Sanding shaft
64	6885.0606.025	Parallel key DIN 6885 6x6x25
65	100.02.03.200	Spacer ring
66	000.11.40.102	Shaft seal
67	0988.0025.010	Washer DIN 988 25x35x1

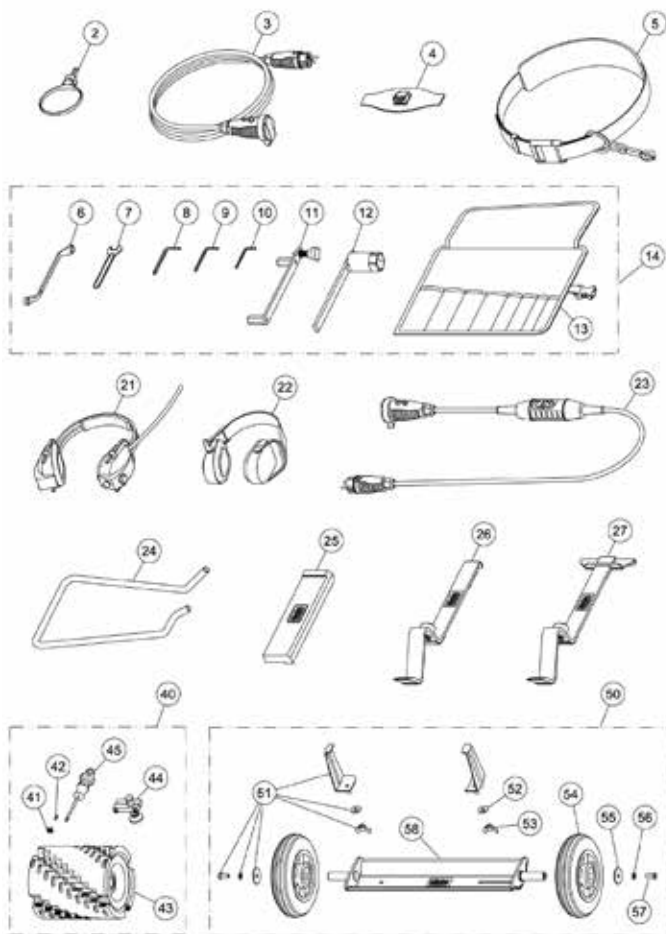


Item	Part Number	Product
1	100.65.00.100	Motor, 230 V / 50 CPS/ 2.2 kW
	101.65.00.100	Motor, 230 V / 60 CPS/ 2.2 kW
	102.65.00.100	Motor, 220 V / 60 CPS/ 2.9 kW, USA
	105.65.00.100	Motor, 400 V / 50 CPS/ 4.0 kW,
2	000.70.17.092	V-belt
3	000.70.10.067	V-belt
4	0912.1008.020	Screw ODIN 912 M8x20
5	0127.1008.000	Spring washer DIN 127 8 (MS)
6	100.65.29.200	Motor bearing bracket
7	0933.1008.018	Screw DIN 933 M8x18



Item	Part Number	Product
9	100.65.30.100	Motor nut
10	100.65.25.100	Motor mounting
11	100.65.09.100	Fan cover
12	7500.1005.006	Screw DIN 7500 C M5x6
13	0471.0030.000	Circlip DIN 471 30x1.5
14	100.65.08.105	Fan wheel
16	6885.0807.020	Parallel key DIN 6885 8x7x20
17	6885.0606.025	Parallel key DIN 6885 6x6x25
18	100.65.06.100	Motor pulley
19	000.10.10.061	Washer
20	0912.1006.014	Screw DIN 912 M6x14
21	100.65.80.205	Eye bolt
22	100.65.35.100	Motor tensioner
23	0933.1008.022	Screw DIN 933 M8x22
26	100.65.75.100	Motor cable 3 x 2.5 mm <sup>2</sup> (for motor as from 2008)
	000.65.43.251	Motor cable 3 x 2.5 mm <sup>2</sup> (for motor until 2007)
	102.65.75.100	Motor cable 3 x 2.5 mm <sup>2</sup> , USA
	000.65.43.257	Motor cable 3 x 2.5 mm <sup>2</sup> , USA (for motor until 2007)
	105.65.75.100	Motor cable 5 x 1.5 mm <sup>2</sup> (three-phase AC motor from 2008)
27	100.65.40.200	Switch box for 230 V / 50 CPS
	102.65.40.200	Switch box for 220-230 V / 60 CPS
28	000.65.10.041	Running capacitor 40 µF
29	000.65.62.211	Switch button
30	000.65.60.253	Switch
	000.65.60.401	Switch for three-phase AC motor
31	000.65.10.061	Starting capacitor 60 µF
	000.65.10.131	Starting capacitor 130 µF, USA
32	000.65.20.035	Contacteur
	000.65.20.032	Contacteur complete for three-phase AC motor
33	102.65.60.200	Emergency switch USA, complete
34	000.65.62.221	Red button for emergency switch USA
35	000.65.25.020	Lamp red for three-phase AC motor
36	000.65.20.220	Relay for three-phase AC motor
37	100.65.14.105	Sealing plate
38	000.65.12.091	Discharging resistor
39	000.68.60.207	Nut (for motor as from 2008)
40	100.65.47.200	Cover with seal
41	7500.1005.825	Screw DIN 7500 M M5x25
42	000.65.80.063	Fuse (for motor until 04/2022)
43	000.65.82.012	Attachment for fuse (for motor until 04/2022)
44	000.65.80.065	Fuse (for motor as from 05/2022)
45	000.65.82.020	Conversion kit for fuse-holder (from 05/2022)
46	000.65.71.023	Mounting case
47	000.65.72.022	Jack insert

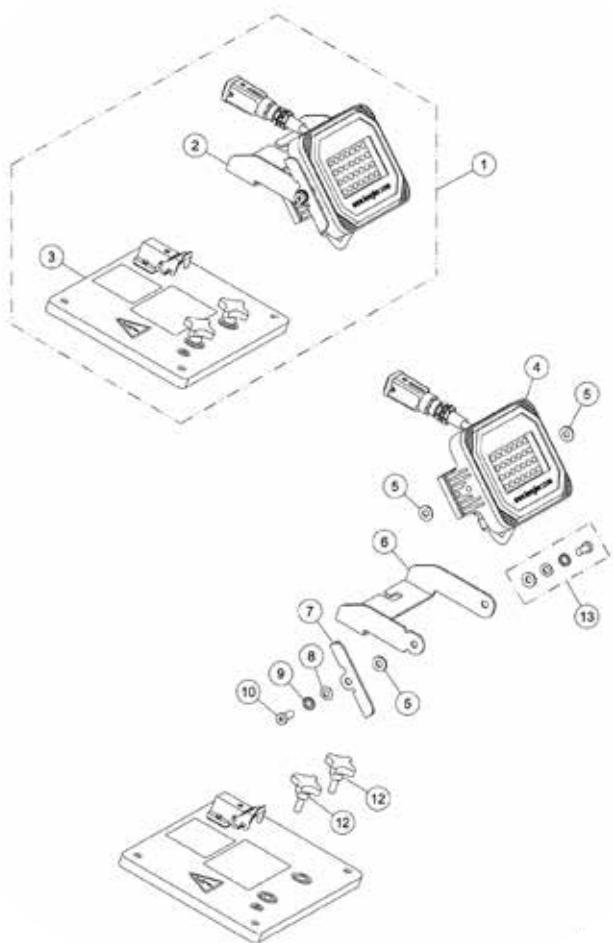
# Lägler HUMMEL - Spare Parts



HUMMEL 6  
01.11.2022

Item	Part Number	Product
2	000.01.40.110	MultiClip
3	000.65.53.251	Extension cable 3 x 2.5 mm <sup>2</sup> , 10m long
	000.65.53.252	Extension cable 3 x 2.5 mm <sup>2</sup> , 20 m long
	000.65.55.151	Extension cable 5 x 1.5 mm <sup>2</sup> , 10 m long, for three-phase AC motor
4	000.01.20.013	Respiratory protection mask FFP2
5	000.01.50.010	Safety belt
6	000.95.21.103	Closed mouth wrench 10/13 mm
7	000.95.11.171	Open mouth wrench 17 mm
8	000.93.11.061	Hexagonal socket screw wrench 6 mm

Item	Part Number	Product
9	000.93.11.051	Hexagonal socket screw wrench 5 mm
10	000.93.11.041	Hexagonal socket screw wrench 4 mm
11	100.00.50.200	Setting fixture for wheels (for HUMMEL as from 09/2022)
	100.00.50.100	Setting fixture for wheels (for HUMMEL until 08/2022 + for ELF)
12	100.00.45.105	Box wrench
13	000.01.30.012	Tool bag, empty
14	100.98.00.200	Tool bag, complete (for HUMMEL as from 09/2022)
	100.98.00.100	Tool bag, complete (for HUMMEL until 08/2022 + for ELF)
21	000.01.10.011	Foldable earmuff type MUSIMUFF with FM radio
22	000.01.10.021	Foldable earmuff type POCKET
23	000.01.65.020	Safety switch PRCD-S (for German mains supply)
24	100.00.55.100	Carrying handle HUMMEL
25	701.10.00.100	Impact tool
26	702.00.00.200	Parquet layer tool ZUGEISEN, small
27	703.00.00.200	Parquet layer tool ZUGEISEN, broad
40	000.10.42.250	Milling drum set HUMMEL with Systainer
41	900.02.45.105	Carbide indexable insert (10 pieces per package)
42	900.02.47.105	Screw for indexable insert
43	000.10.42.241	Milling drum with indexable inserts HUMMEL
44	000.10.42.243	Cutting depth adjustment, complete
45	000.91.30.151	Torx screwdriver TI5
50	720.00.00.300	Trolley TRANSCART, complete
51	720.10.00.300	Accessories TRANSCART (as from 2022)
	720.10.00.200	Accessories TRANSCART (until 2021)
52	0125.1008.000	Washer DIN 125 8.4 (MB)
53	0315.1008.000	Wing nut DIN 315 MB
54	850.05.19.105	Wheel (for SINGLE as from 2019, for TRANSCART as from 2022)
	720.05.00.205	Wheel TRANSCART (until 2021)
55	000.10.10.085	Washer
56	0127.1008.000	Spring washer DIN 127 8 (MB)
57	7984.1008.020	Screw DIN 7984 M8x20
58	720.01.00.300	Chassis TRANSCART (as from 2022)
	720.01.00.200	Chassis TRANSCART (until 2021)



Item	Part Number	Product
1	100.63.00.100	Upgrade kit HUMMEL LED light (1990 onwards)
	100.63.00.200	Upgrade kit HUMMEL LED light (2020 onwards)
2	100.63.01.100	LED work light HUMMEL, complete
3	100.63.47.100	Cover of switch box, for LED light
4	100.63.03.100	LED work light HUMMEL
5	000.10.10.089	Washer
6	100.63.12.100	Light holder
7	100.63.13.100	Swivel stopper
8	0125.1008.000	Washer DIN 125 8.4 (M8)
9	6798.1008.900	Washer DIN 6798 A 8.4 (M8)
10	7984.1008.020	Screw DIN 7984 M8x20
12	000.20.20.085	Cross formed screw
13	100.63.15.100	Assembly material, LED work light



## ATTENTION!

Please include your machine's serial number in all inquiries and spare parts orders so that we can provide you with the correct spare parts.



The motor type plate of FLIP is located on the switch box of motor (Fig. 1). The following technical data are specified on the motor type plate (Fig. 2):

1. Manufacturer
2. **Serial number of machine (Mach. - No.)**
3. Year of manufacture (Year)
4. Motor size (Type)
5. Required mains voltage in volt (V)
6. Current consumption in ampere (A)
7. Motor frequency in CPS (Hz)
8. Motor power in kilowatt (KW)
9. Motor speed in 1/min (Rpm)
10. Post factor in cosine phi (cos)
11. Insultation class (Insul. Cl.)
12. Protection class (Prot. Cl.)
13. Type of current
14. Country of manufacture

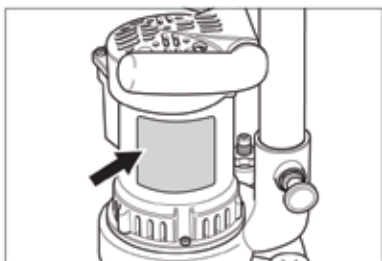
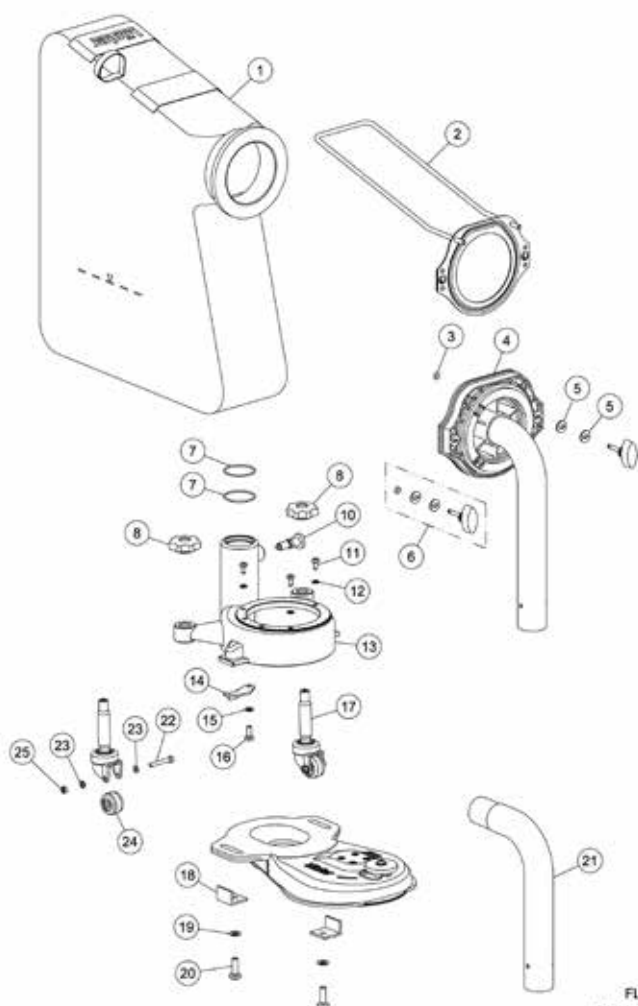


Fig. 1 Type plate on motor housing.



Fig. 2 Data on type plate.

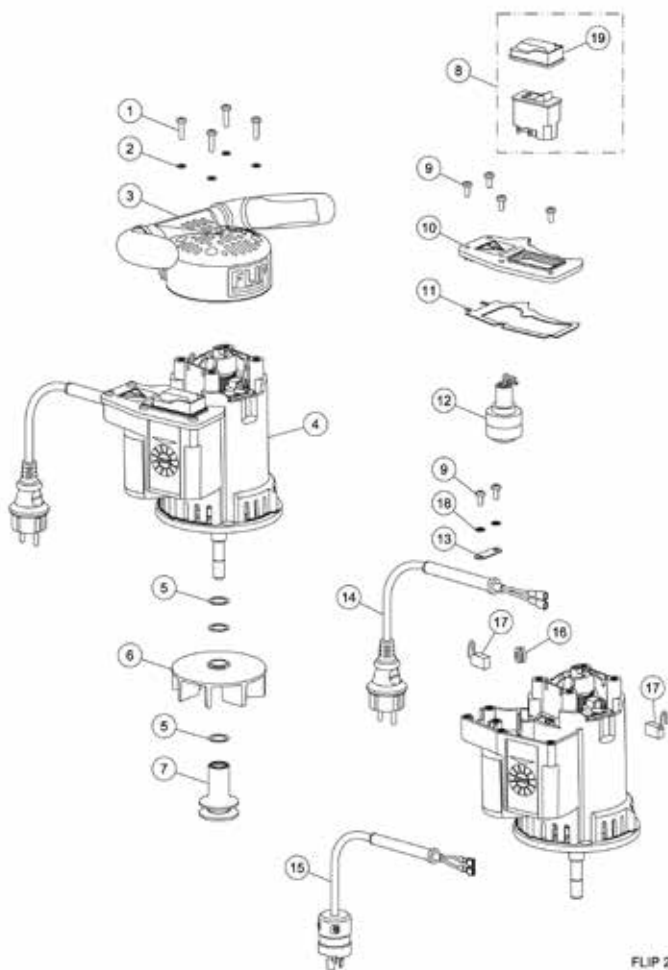


FLIP 1  
01.11.2014



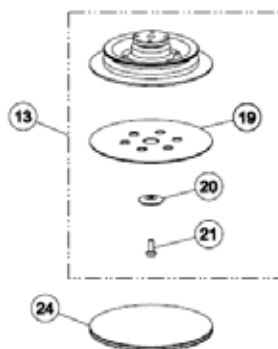
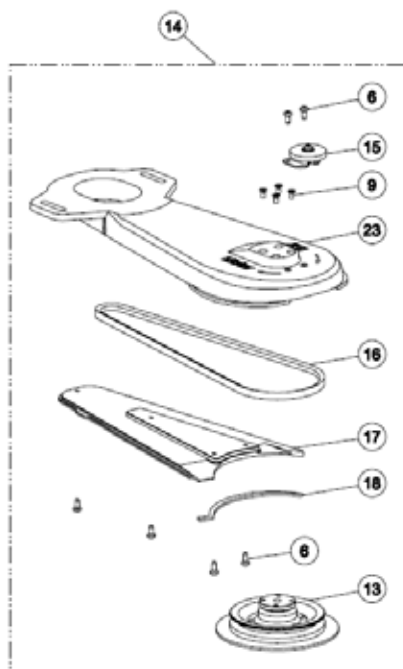
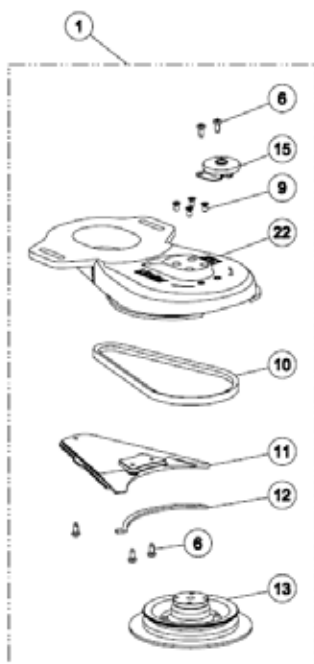
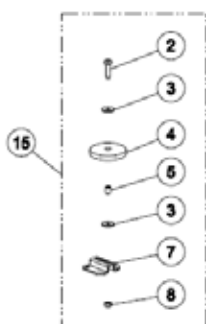
Item	Part Number	Product
	320.00.80.100	Dust bag FLIP, complete
1	320.00.86.105	Dust bag FLIP
2	320.00.82.100	Fixing plate with bracket
3	000.11.05.901	O-ring
4	320.14.00.100	Pipe socket, complete
5	000.10.10.055	Washer
6	000.25.11.433	Locking pin
7	000.11.40.901	O-ring
8	320.05.11.205	Star grip (locknut)
10	000.20.15.005	Stop bolt
11	7500.1005.012	Screw DIN 7500 C M5x12
12	0125.1005.000	Washer DIN 125 5.3 (M5)
13	320.08.10.100	Fan housing, complete
14	320.08.03.100	Belt tightener plate
15	0125.1006.000	Washer DIN 125 6.4 (M6)
16	7985.1006.816	Screw DIN 7985 M6x16
17	320.05.00.200	Guide roller, complete
18	320.01.09.100	Guide angle
19	0125.1008.000	Washer DIN 125 8.4 (M8)
20	7985.1008.825	Screw DIN 7985 M8x25
21	320.14.92.100	Pipe socket for vacuum cleaner
22	0912.1005.035	Screw DIN 912 M5x35
23	0125.1005.000	Washer DIN 125 5.3 (M5)
24	320.05.09.305	Wheel
25	0980.1005.000	Nut DIN 980 M5

# L gler FLIP - SPARE PARTS

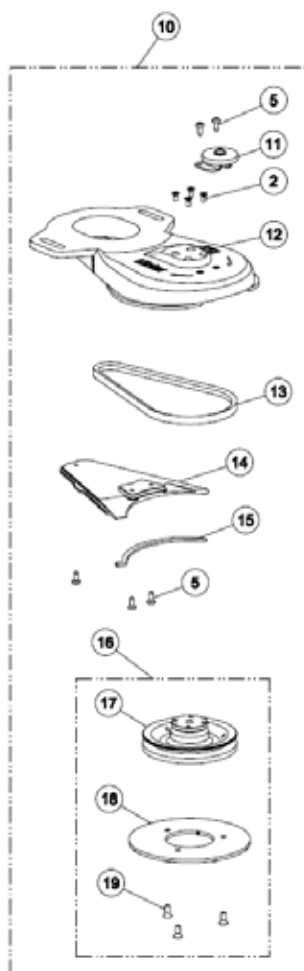
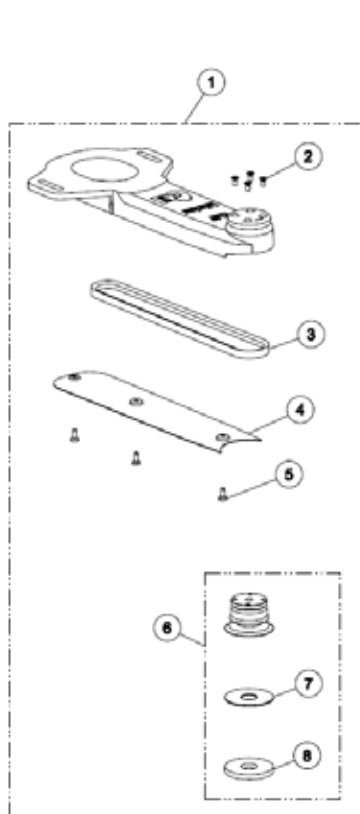


FLIP 2  
04 04 0000

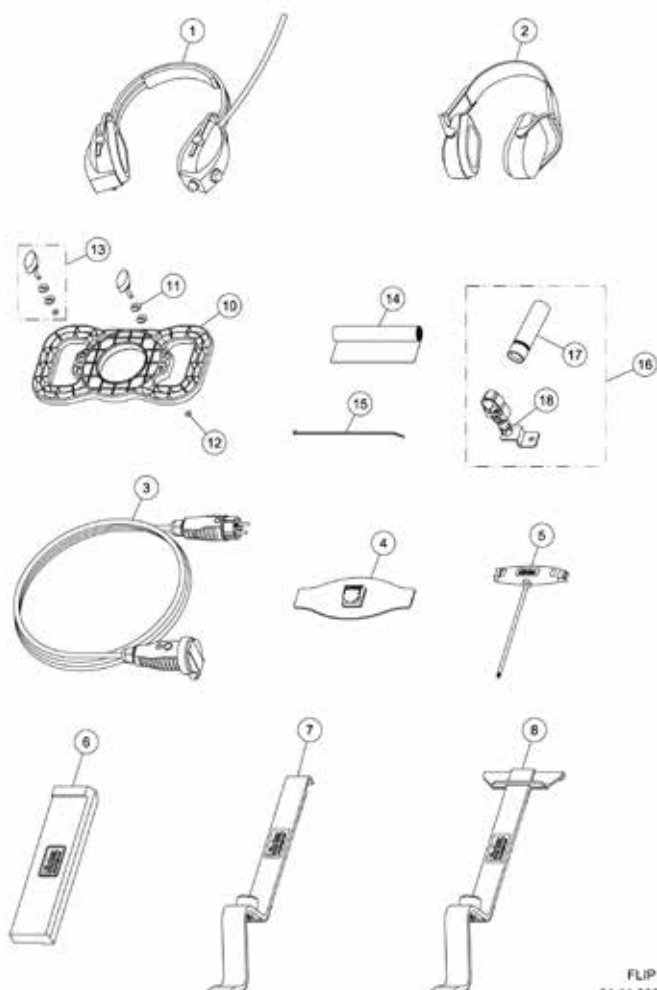
Item	Part Number	Product
1	7500.1005.020	Screw DIN 7500 C M5x20
2	0127.1005.000	Spring washer DIN 127 5 (M5) Handle FLIP
3	320.20.10.105	Handle FLIP
4	320.65.00.100	Universal motor, 230 V / 50 + 60 CPS
	322.65.00.100	Universal motor, 110 V / 50 + 60 CPS, USA
5	0988.0016.005	Washer DIN 988 16x22x0.5
6	320.10.10.200	Fan wheel
7	320.65.06.100	Motor pulley
8	000.65.60.256	Switch, 230 V / 50 + 60 CPS
	000.65.60.156	Switch, 110 + 120 V / 60 + 50 CPS
9	7500.1005.012	Screw DIN 7500 C M5x12
10	320.65.47.100	Cover with seal
11	320.65.48.105	Cover seal
12	320.65.30.100	Interference-free capacitor, complete
13	320.65.59.100	Latch fastener
14	000.65.42.151	Motor cable 2 x 1.5 mm <sup>2</sup>
15	000.65.42.153	Motor cable 2 x 1.5 mm <sup>2</sup> , USA
16	000.63.12.071	Rubber tube
17	000.65.84.012	Carbon brush FLIP
18	0125.1005.000	Washer DIN 125 5.3 (M5)
19	000.65.62.160	PVC cap with switch frame



Item	Part Number	Product
1	320.01.00.100	Short attachment FLIP, complete
2	7500.1005.020	Screw DIN 7500 C M5x20
3	9021.1005.000	Washer DIN 9021 5.3 (M5)
4	320.60.02.100	Wall-protecting roller
5	000.43.15.052	Bush
6	7500.1005.012	Screw DIN 7500 C M5x12
7	320.60.01.100	Holder for wall-protecting roller
8	0934.1005.000	Nut DIN 934 M5
9	0965.1005.810	Screw DIN 965 M5x10
10	000.70.10.055	V-belt
11	320.01.03.100	Attachment cover short, complete
12	320.01.51.105	Seal (attachment cover short)
13	320.01.91.200	Sanding plate, complete
14	330.01.00.100	Long attachment FLIP, complete
15	320.60.00.100	Wall-protecting roller with bracket
16	000.70.10.087	V-belt
17	330.01.03.100	Attachment cover long, complete
18	330.01.51.105	Seal (attachment cover long)
19	350.03.35.205	Velcro disc 150 mm
20	320.02.05.100	Paper tensioning disc
21	7985.1006.816	Screw DIN 7985 M6x16
22	320.01.01.105	Short attachment FLIP (only housing)
23	330.01.01.105	Long attachment FLIP (only housing)
24	320.02.13.105	Velcro disc flexible 150 mm



Item	Part Number	Product
1	335.01.00.100	Corner attachment FLIP, complete
2	0965.1005.810	Screw DIN 965 M5x10
3	000.70.10.067	V-belt
4	335.01.02.100	Cover, corner attachment
5	7500.1005.012	Screw DIN 7500 C M5x12
6	335.01.91.100	Sanding plate for corner attachment, complete
7	335.02.12.105	Velcro coating, self adhesive
8	335.02.13.105	Velcro ring flexible
10	320.01.60.100	Milling attachment FLIP, complete
11	320.60.00.100	Wall-protecting roller with bracket
12	320.01.01.105	Short attachment FLIP (only housing)
13	000.70.10.055	V-belt
14	320.01.03.100	Attachment cover short, complete
15	320.01.51.105	Seal (attachment cover short)
16	320.01.61.100	Milling disc FLIP, complete
17	320.03.60.100	Pulley, milling attachment FLIP
18	320.02.21.100	Milling disc FLIP
19	0965.1006.814	Screw DIN 965 M6x14





Item	Part Number	Product
1	000.01.10.011	Foldable earmuff type MUSIMUFF with FM radio
2	000.01.10.021	Foldable earmuff type POCKET
3	000.65.53.151	Extension cable 3 x 1.5 mm <sup>2</sup> , 10 m long
4	000.01.20.013	Respiratory protection mask FFP2
5	000.91.40.001	Universal spanner
6	701.10.00.100	Impact tool
7	702.00.00.200	Parquet layer tool ZUGEISEN, small
8	703.00.00.200	Parquet layer tool ZUGEISEN, broad
10	320.00.70.100	Emptying fixture, complete
11	000.10.10.055	Washer
12	000.11.05.901	O-ring
13	000.25.11.433	Locking pin
14	00.000.25.570	Waste bag
15	000.61.10.363	Cable tie
16	320.63.00.100	Working light FLIP + ELAN, complete
17	320.63.10.100	Working light FLIP + ELAN
18	320.63.20.100	Light bracket FLIP + ELAN (as from 06/2023)
	320.63.20.100	Light bracket FLIP + ELAN (until 05/2023)



## ATTENTION!

Please include your machine's serial number in all inquiries and spare parts orders so that we can provide you with the correct spare parts.



The motor type plate of FLIP is located on the switch box of motor (Fig. 1). The following technical data are specified on the motor type plate (Fig. 2):

1. Manufacturer
2. **Serial number of machine (Mach. - No.)**
3. Year of manufacture (Year)
4. Motor size (Type)
5. Required mains voltage in volt (V)
6. Current consumption in ampere (A)
7. Motor frequency in CPS (Hz)
8. Motor power in kilowatt (KW)
9. Motor speed in 1/min (Rpm)
10. Post factor in cosine phi (cos)
11. Insultation class (Insul. Cl.)
12. Protection class (Prot. Cl.)
13. Type of current
14. Country of manufacture

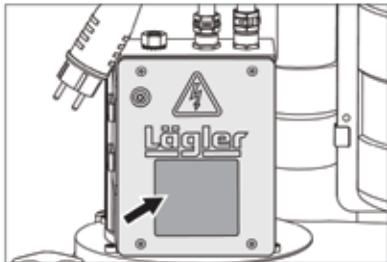


Fig. 1 Type plate on switch box of motor

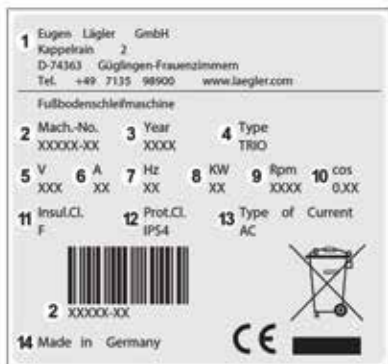
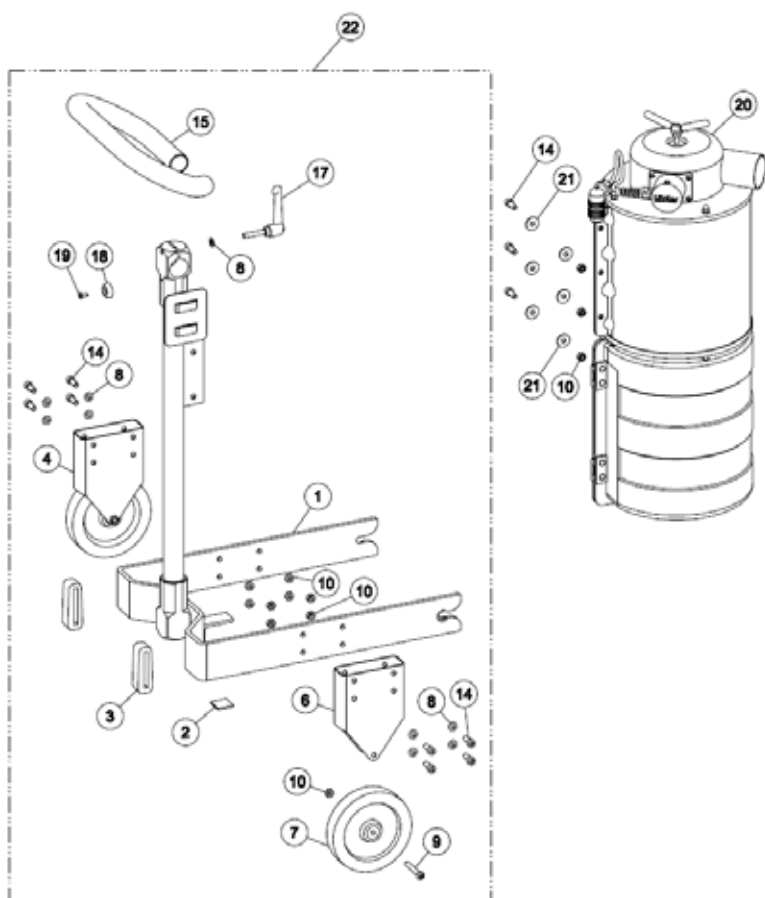
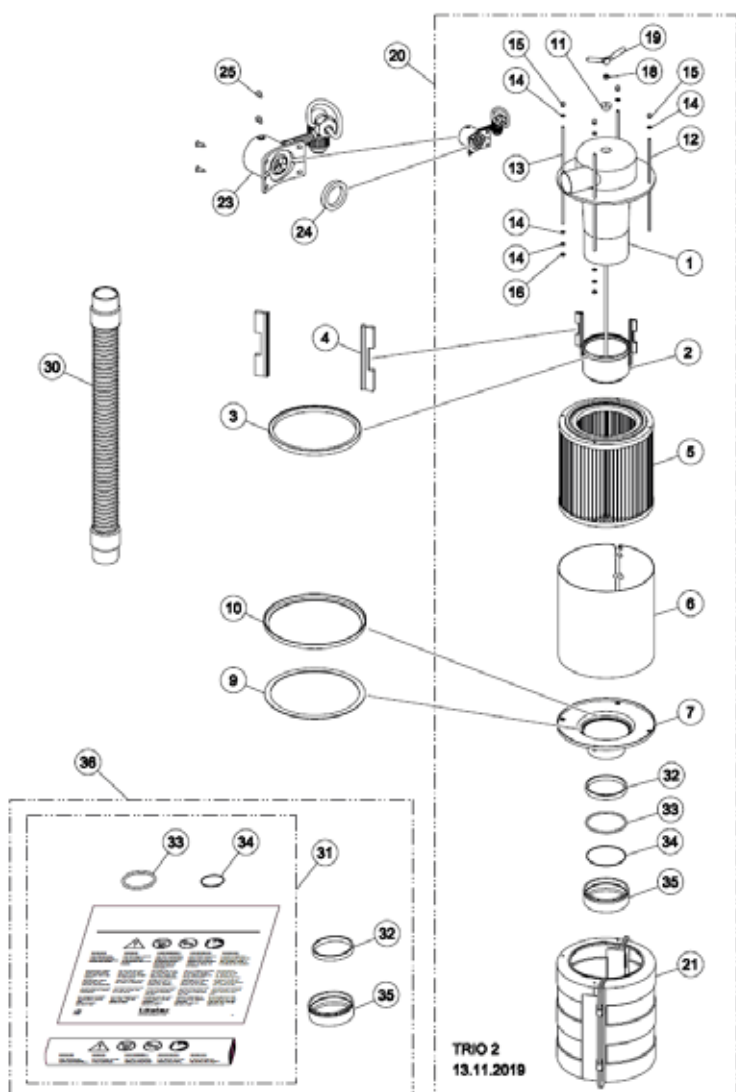


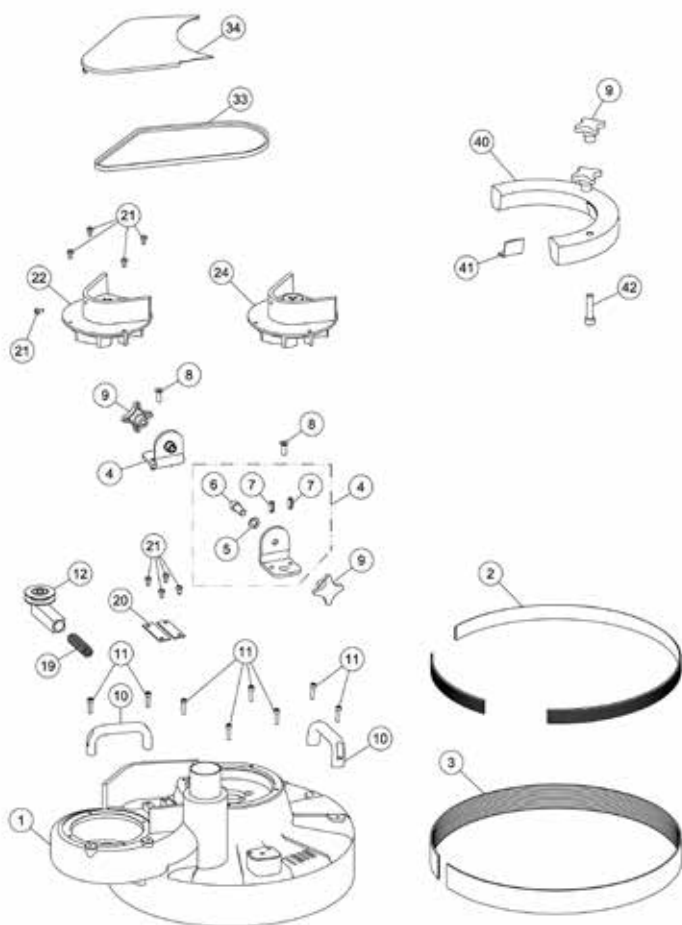
Fig. 2 Data on type plate.



Item	Part Number	Product
1	900.70.05.100	Frame, complete
2	900.70.25.105	Bumper felt
3	900.70.80.105	Protective rubber
4	900.70.36.100	Wheel, complete
6	900.70.34.100	Wheel holder
7	900.70.32.205	Wheel
8	0125.1008.000	Washer DIN 125 8.4 (M8)
10	7380.1008.055	Screw ISO 7380 M8x55
14	0980.1008.000	Nut DIN 980 M8
15	0912.1008.020	Screw DDIN 912 M8x20
16	900.70.70.300	Handle
17	000.20.40.081	Clamping device
18	900.70.52.105	Rubber buffer
19	7500.1005.012	Screw DIN 7500 C M5x12
20	900.00.16.100	Dust separator, complete
21	9021.0208.000	Washer DIN 9021 8.4 (M8)
22	900.70.00.100	Chassis, complete



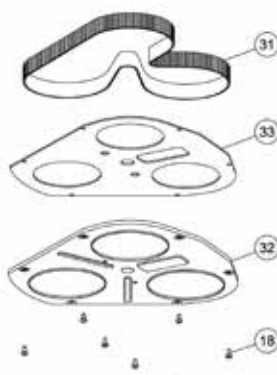
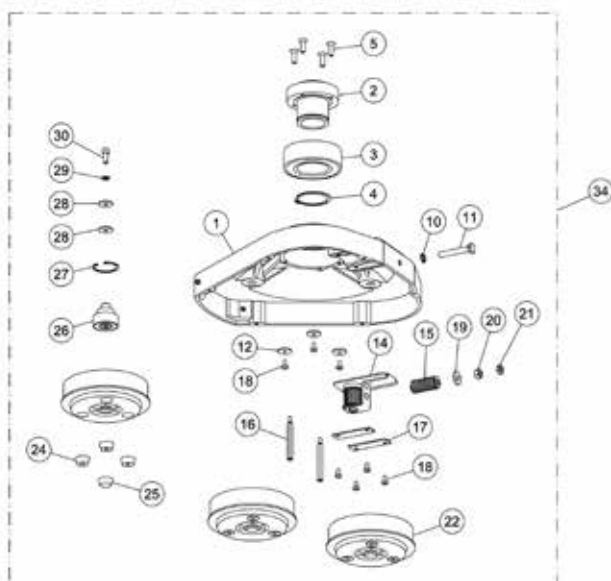
Item	Part Number	Product
1	900.16.10.100	Separator upper part
2	900.16.21.100	Opener, complete
3	900.16.23.100	Sealing brush
4	900.16.45.105	Filter brush
5	900.16.18.105	Filter cartridge
6	900.16.19.100	Protective cover
7	900.16.17.100	Cover lower separator, complete
9	900.16.25.105	Sealing
10	900.16.22.100	Ring
11	900.03.30.105	Rubber plug with hole
12	900.16.27.105	Screw, short
13	900.16.26.105	Screw, long
14	0125.1006.000	Washer
15	1587.1006.000	Cap nut
16	0980.1006.000	Nut
18	0934.1008.000	Nut
19	000.20.45.083	Wing nut
21	900.17.00.200	Dust bag box, complete
23	900.15.00.100	Pressure control sensor, complete
24	900.15.40.100	Sealing washer
26	7983.1042.013	Screw
30	900.14.00.105	Hose
31	900.00.80.105	Disposable dust bag TRIO (25 pieces per carton)



TRIO 3  
01.05.2020

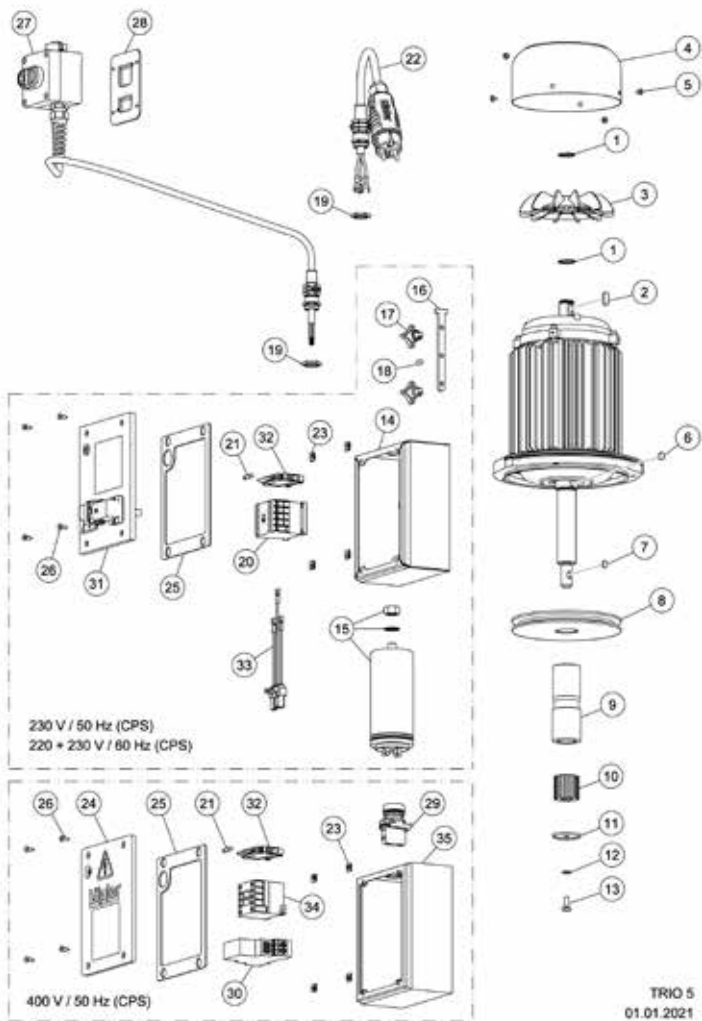


Item	Part Number	Product
1	900.01.10.200	Machine housing
2	900.01.42.100	Self-adhesive Velcro negative
3	900.01.50.100	Velcro seal
	900.01.50.105	Velcro seal TRIO by the roll (50 m)
4	900.01.62.100	Angle complete (sold in pairs only)
5	0127.1012.000	Spring washer DIN 127 12 (M12)
6	0912.1012.030	Screw DIN 912 M12x30
7	1481.0008.020	Screw ISO 7380 M8x55
8	7991.1008.025	Screw DIN 7991 M8x25
9	000.20.20.121	Cross grip
10	000.20.10.121	Handle
11	0912.1006.025	Screw DIN 912 M6x25
12	900.58.00.200	Belt tensioner, complete
19	000.31.20.091	Pressure spring
20	900.01.20.200	Guide plate
21	7500.1006.012	Screw DIN 7500 C M6x12
22	900.10.00.200	Fan insert complete, European version
24	902.10.00.200	Fan insert complete, American version
33	000.70.10.087	V-belt
34	900.50.10.100	Belt guard
40	900.80.00.100	Additional weight, complete
41	900.80.21.105	Felt
42	0912.1012.050	Screw DIN 912 M12x50



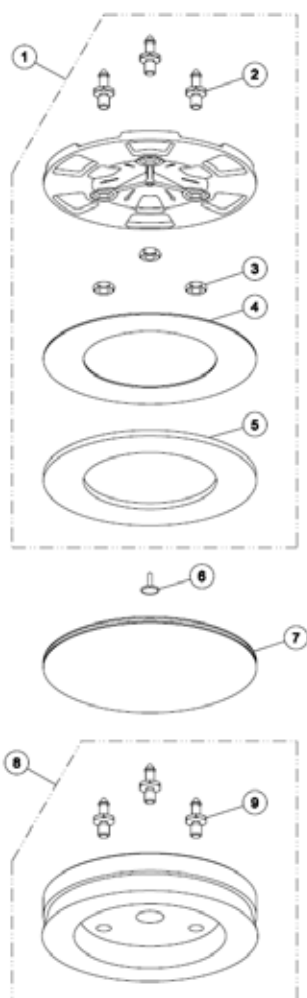
Item	Part Number	Product
1	900.07.10.200	Inner housing
2	900.07.20.100	Pick up
3	3212.0060.202	Ball bearing
4	0471.0060.000	Circlip DIN 471 60x2
5	7991.1008.025	Screw DIN 7991 M8x25
10	6797.1010.000	Washer DIN 6797 I 10.5 (M10)
11	0933.1010.065	Screw DIN 933 M10x65
12	000.10.10.061	Washer
14	900.67.00.200	Tooth belt tensioner, complete
15	000.31.25.061	Pressure spring
16	900.07.42.205	Bolt
17	900.01.20.200	Guide plate
18	7500.1006.012	Screw DIN 7500 C M6x12
19	7349.1010.000	Washer DIN 7349 10.5 (M10)
20	0934.1010.000	Nut DIN 934 M10
21	0439.1010.000	Nut DIN 439 M10
22	900.03.00.100	Pulley, complete
24	900.03.30.105	Rubber plug with hole
25	900.03.35.105	Rubber plug without hole
26	900.03.10.100	Axle pulley, complete
27	0472.0047.000	Circlip DIN 472 47x1.75
28	000.10.10.081	Washer
29	0127.1008.000	Spring washer DIN 127 8 (M8)
30	0912.1008.020	Screw DDIN 912 M8x20
31	000.75.28.152	Tooth belt
32	900.07.32.100	Cover complete
33	900.07.31.105	Sealing felt
34	900.07.00.100	Inner housing, complete

# Lägler TRIO - SPARE PARTS



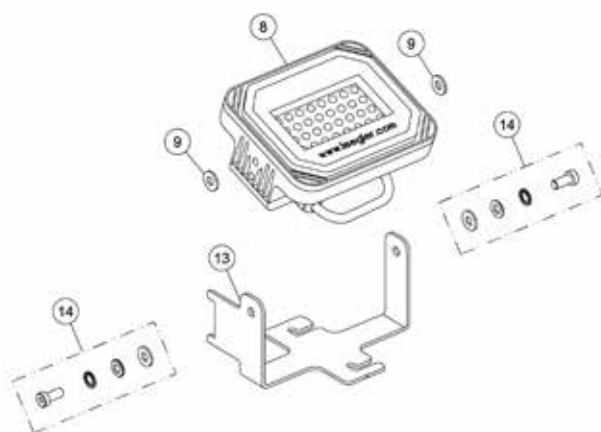
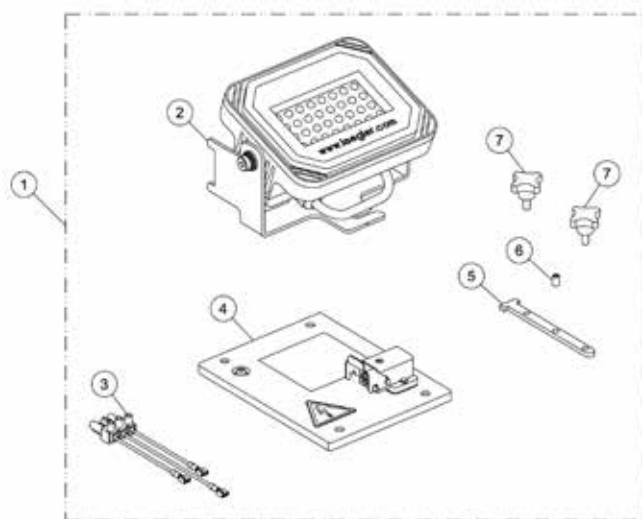
Item	Part Number	Product
	910.65.00.100	Motor, 230 V / 50 CPS / 1.8 kW
	911.65.00.100	Motor, 230 V / 60 CPS / 1.8 kW
	912.65.00.100	Motor, 220 V / 60 CPS / 1.8 kW, USA
	905.65.00.100	Motor, 400 V / 50 CPS / 2.2 kW, three-phase current
1	0471.0020.000	Circlip DIN 471 20x1.2
2	6885.0606.018	Parallel key DIN 6885 6x6x18
3	900.65.08.100	Fan blade
4	900.65.09.100	Fan cover

Item	Part Number	Product
5	7985.1004.805	Screw DIN 7985 M4x5
6	6885.0606.010	Parallel key DIN 6885 6x6x10
7	6885.0505.010	Parallel key DIN 6885 5x5x10
8	900.65.06.100	Motor pulley
9	900.65.43.200	Spacer sleeve
10	900.65.41.105	Pinion
11	900.65.42.100	Washer
12	0127.1006.000	Spring washer DIN 127 6 (M6)
13	7985.1006.816	Screw DIN 7985 M6x16
14	900.65.40.300	Switch box
15	000.65.10.041	Running capacitor 40 $\mu$ F
16	900.63.14.100	Clamping plate
17	000.20.20.065	Cross formed screw
18	0913.0006.010	Grub screw DIN 913 M6x10
19	000.68.60.207	Nut (for motor as from 2008)
	000.68.60.163	Nut (for motor until 2007)
20	000.65.20.012	Contacteur
21	000.65.80.061	Fuse, 6.3 A
22	100.65.75.100	Motor cable 3 x 2.5 mm <sup>2</sup> (from 2008)
	000.65.43.251	Motor cable 3 x 2.5 mm <sup>2</sup> (until 2007)
	102.65.75.100	Motor cable 3 x 2.5 mm <sup>2</sup> , USA (from 2008)
	000.65.43.257	Motor cable 3 x 2.5 mm <sup>2</sup> , USA (until 2007)
	105.65.75.100	Motor cable 5 x 1.5 mm <sup>2</sup> (from 2008)
	000.65.45.151	Motor cable 5 x 1.5 mm <sup>2</sup> (until 2007)
23	000.50.10.110	Clip nut
24	900.65.47.100	Cover of switch box with seal
25	465.65.48.105	Cover seal
26	7983.1042.013	Screw DIN 7983 4.2x13
27	900.65.60.200	Switch, complete (manufacture 2008)
	900.65.60.100	Switch, complete (manufacture 2007)
28	900.65.55.200	Bracket
29	000.65.25.020	Lamp red for three-phase AC motor
30	000.65.20.220	Relay for three-phase AC motor
31	900.63.47.100	Cover of switch box with seal
32	000.65.82.010	Fuse holder
33	900.63.75.100	Socket for light connection, complete
34	000.65.20.015	Contacteur for three-phase AC motor
35	900.65.40.200	Switch box



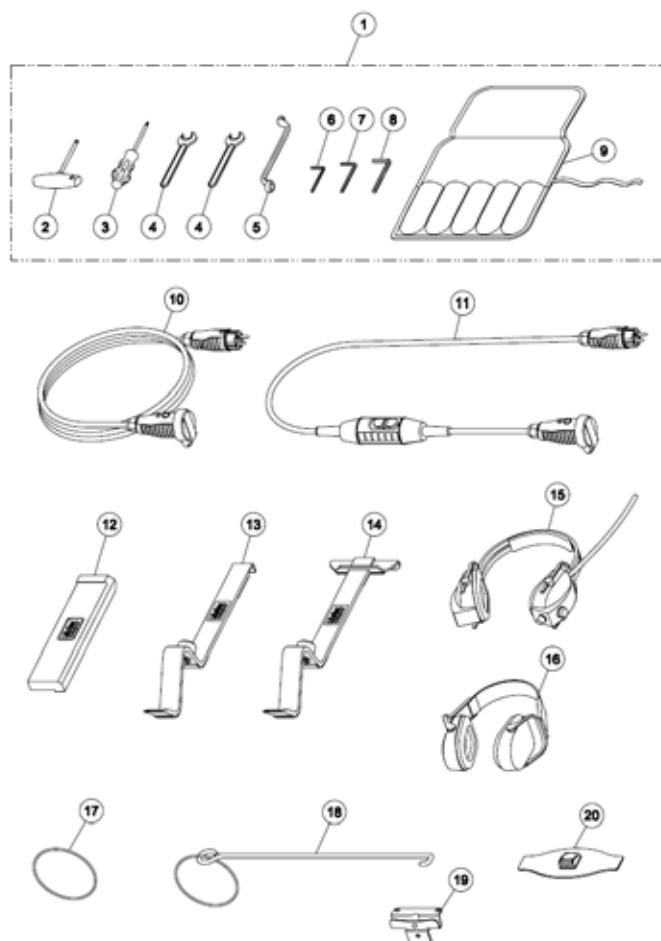
TRIO 6  
01.01.2024

Item	Part Number	Product
1	900.02.10.200	Sanding plate, complete
2	900.02.06.105	Fastening bolt
3	0439.0310.012	Nut DIN 439 M10x1.25
4	900.02.12.305	Velcro ring 200 mm
5	900.02.13.205	Velcro ring flexible 200/125 mm diameter
6	900.02.23.205	Plastic pin
7	900.02.14.105	Velcro disc flexible 200 mm
8	900.02.60.100	Brushing disc TRIO with nylon bristles
	900.99.01.100	Set brushing discs nylon TRIO with systainer
	900.02.70.100	Brushing disc TRIO with brass bristles
	900.99.02.100	Set brushing discs brass TRIO with systainer
	900.02.80.100	Brushing disc TRIO with stainless steel bristles (wire diameter 0.2 mm)
	900.99.03.100	Set brushing discs stainless steel TRIO with systainer
9	900.02.42.105	Fastening bolt
10	900.02.40.100	Milling disc TRIO, complete
11	0912.1006.014	Screw DIN 912 M6x14
12	0934.1008.000	Nut DIN 934 M8
13	900.02.41.100	Disc
14	900.02.43.100	Holder for indexable inserts
15	900.02.49.105	Special screw
16	900.02.45.105	Carbide indexable insert (10 pieces per package)
17	900.02.47.105	Screw for indexable insert
	900.99.11.100	Diamond sanding plates TRIO, set complete with Systainer
18	900.02.90.100	Diamond sanding disc TRIO, complete
19	0912.1006.012	Screw DIN 912 M6x12
20	900.02.91.100	Diamond sanding segment, grit 40/50, green





Item	Part Number	Product
1	900.63.00.100	Upgrade kit TRIO LED light.
2	900.63.01.100	LED work light, complete
3	900.63.75.100	Socket for light connection, complete
4	900.63.47.100	Cover of switch box with seal
5	900.63.14.100	Clamping plate
6	0913.0006.010	Grub screw DIN 913 M6x10
7	000.20.20.065	Cross formed screw
8	100.63.03.100	LED work light HUMMEL
9	000.10.10.089	Washer
13	900.63.12.100	Light holder
14	100.63.15.100	Assembly material, LED work light



Item	Part Number	Product
1	900.98.00.100	Tool bag for TRIO, complete
2	000.91.40.301	Torx screwdriver T30
3	000.91.30.151	Torx screwdriver T15
4	000.95.11.171	Open mouth wrench 17 mm
5	000.95.21.103	Closed mouth wrench 10/13 mm
6	000.93.11.041	Hexagonal socket screw wrench 4 mm
7	000.93.11.051	Hexagonal socket screw wrench 5 mm
8	000.93.11.061	Hexagonal socket screw wrench 6 mm
9	000.01.30.011	Tool bag, empty
10	000.65.53.251	Extension cable 3 x 2.5 mm <sup>2</sup> , 10 m long
	000.65.53.252	Extension cable 3 x 2.5 mm <sup>2</sup> , 20 m long
	000.65.55.151	Extension cable 5 x 1.5 mm <sup>2</sup> , 10 m long, for three-phase AC motor
11	000.01.65.020	Safety switch PRCD-S (for German mains supply)
12	701.10.00.100	Impact tool
13	702.00.00.200	Parquet layer tool ZUGEISEN, small
14	703.00.00.200	Parquet layer tool ZUGEISEN, broad
15	000.01.10.011	Foldable earmuff type MUSIMUFF with FM radio
16	000.01.10.021	Foldable earmuff type POCKET
17	00.000.41.002	Strain relief ring
18	100.20.26.100	Cable support, complete
19	900.70.56.100	Cable support bracket
20	000.01.20.013	Respiratory protection mask FFP2

The logo features the word "Whiteriver" in white, bold, sans-serif font, centered within a solid red square. Below this square is a dark grey horizontal bar containing the tagline "wood for living" in a white, lowercase, sans-serif font. The entire logo is superimposed on a background image of a modern living room with a wooden floor, a blue armchair, and a wooden dining table.

**Whiteriver**

wood for living

### **Find Us**

Cluide, Dunleer, Co. Louth  
A92 V8YN  
Phone: 00 353 41 686 1000  
Email: [sales@wrg.ie](mailto:sales@wrg.ie)

### **Follow Us**

Join our social media community for tips and discover new products.



[www.instagram.com/whiteriver\\_group](https://www.instagram.com/whiteriver_group)  
[www.linkedin.com/company/whiteriver-group](https://www.linkedin.com/company/whiteriver-group)



**Keep me, or recycle me**