

RETRO FIT FENCE CHANNEL 1475MM INSTALLATION INSTRUCTIONS



DENVER

Fence Board Dimensions: 160 x 21 x 1780mm

Fence Top Board Dimensions: 140 x 21 x 1780mm

Coverage: 3 Packs + Finishing Top Board = 1524mm (5')

Pack of 3 Fence Board + Top Finishing Board



3 Boards Per Pack



RENO

Fence Board Dimensions: 160 x 21 x 1780mm

Fence Top Board Dimensions: 140 x 21 x 1780mm

Coverage: 3 Packs + Finishing Top Board = 1524mm (5')



TAHOE

Fence Board Dimensions: 160 x 21 x 1780mm

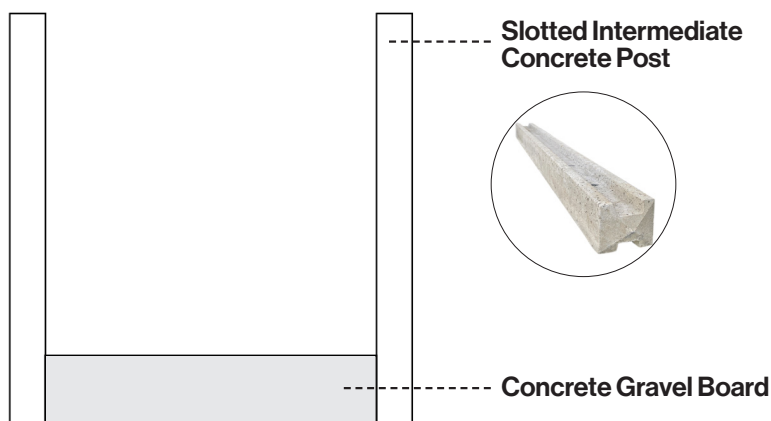
Fence Top Board Dimensions: 140 x 21 x 1780mm

Coverage: 3 Packs + Finishing Top Board = 1524mm (5')



wrg.ie/installation-instructions

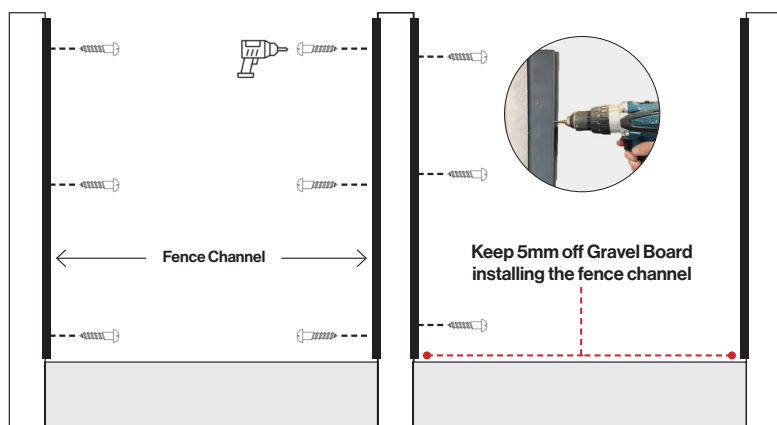
1.



Whiteriver

composite for living

2.



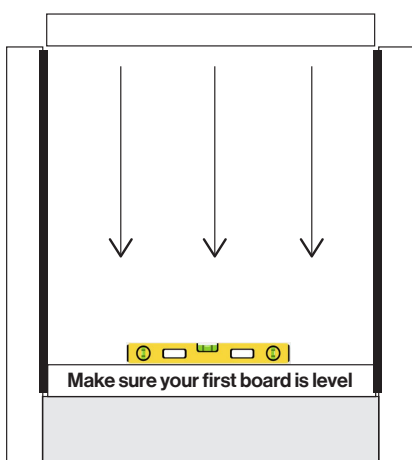
Pre-drill Aluminium Channel and existing concrete post with 5mm drill bit.

32mm concrete screws can directly be fixed through the channel into the post.

6 screws per pack, 3 per channel.

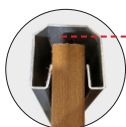
Note: If installing additional fence channel on the other side of the concrete post, holes will need to be offset to avoid drilling through in same position.

3.

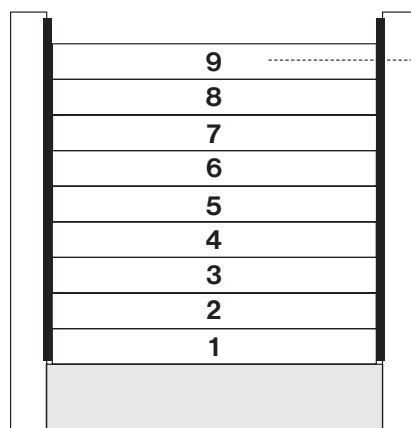


Install all 9 fencing boards.

Board nos. 2, 5 & 8 should contain the strengthening bar for stability.



Note: Always leave minimum of 5mm expansion on each channel end.

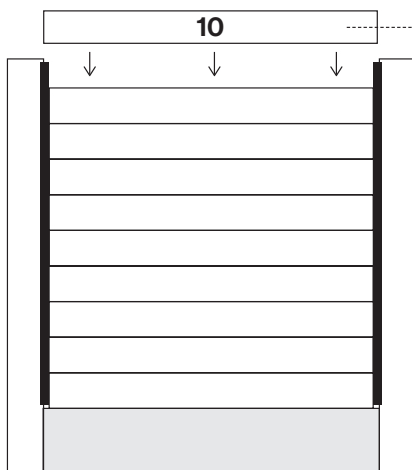


Fencing Boards



Strengthening bar every 3rd board.

4.



Install Final Top Fencing Board

